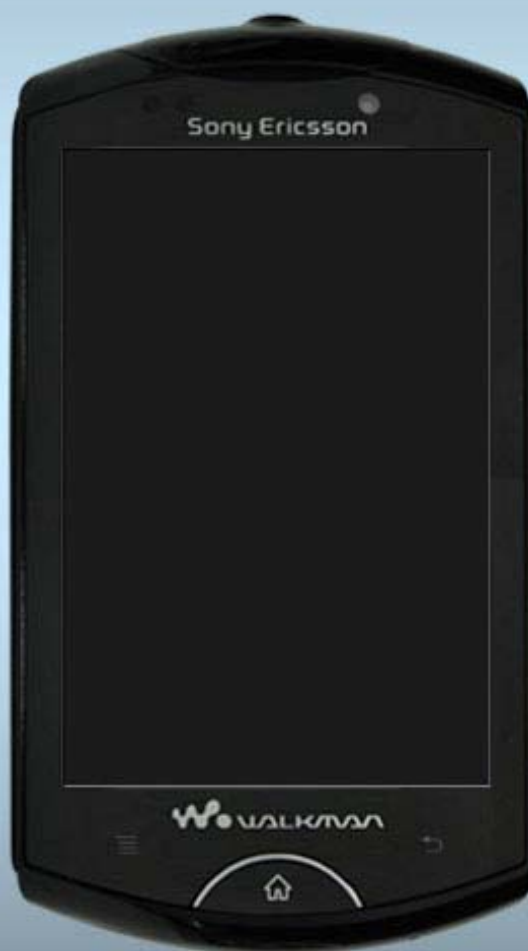




Sony Ericsson

# Working Instruction

– mechanical –



*WT18i*

# CONTENTS

<b>1</b>	<b>Exterior Views.....</b>	<b>4</b>
1.1	WT18i.....	4
<b>2</b>	<b>Tools .....</b>	<b>5</b>
<b>3</b>	<b>Disassembly.....</b>	<b>6</b>
3.1	Assy Housing Battery .....	6
3.2	Battery .....	7
3.3	Assy Housing Rear .....	7
3.4	CMMB Antenna.....	9
3.5	PCBA .....	10
3.6	Assy Metal Frame LCM and LCM TFT 3.2 HVGA.....	13
3.7	Assy Front Housing .....	15
<b>4</b>	<b>Replacement .....</b>	<b>16</b>
4.1	Assy Housing Battery .....	16
4.2	Mesh Speaker Battery Cover.....	16
4.3	Key Side .....	17
4.4	Rubber RF .....	18
4.5	CONN Phone Jack 5PIN.....	19
4.6	Water Intrusion Label.....	20
4.7	Assy Housing Rear .....	21
4.8	CMMB Antenna.....	21
4.9	Speaker Box Top.....	21
4.10	Speaker Box Bottom .....	23
4.11	Core Unit Label.....	25
4.12	Gasket Sponge SIM.....	26
4.13	Mylar Metal Frame LCM .....	27
4.14	CAM 3M FF QXGA .....	28
4.15	Shielding Cover BB 1.....	30
4.16	Shielding Cover BB 2.....	31
4.17	Shielding Cover RF .....	33
4.18	Rubber Front Camera .....	34
4.19	Assy Holder LCM Frame.....	35
4.20	Dome Sheet Home Key .....	36
4.21	Receiver .....	38
4.22	FPC Assy Volume Key .....	40
4.23	Rubber Mic.....	43
4.24	Rubber PROX sensor.....	44
4.25	Assy Metal Frame LCM .....	46
4.26	LCM TFT 3.2 HVGA.....	48



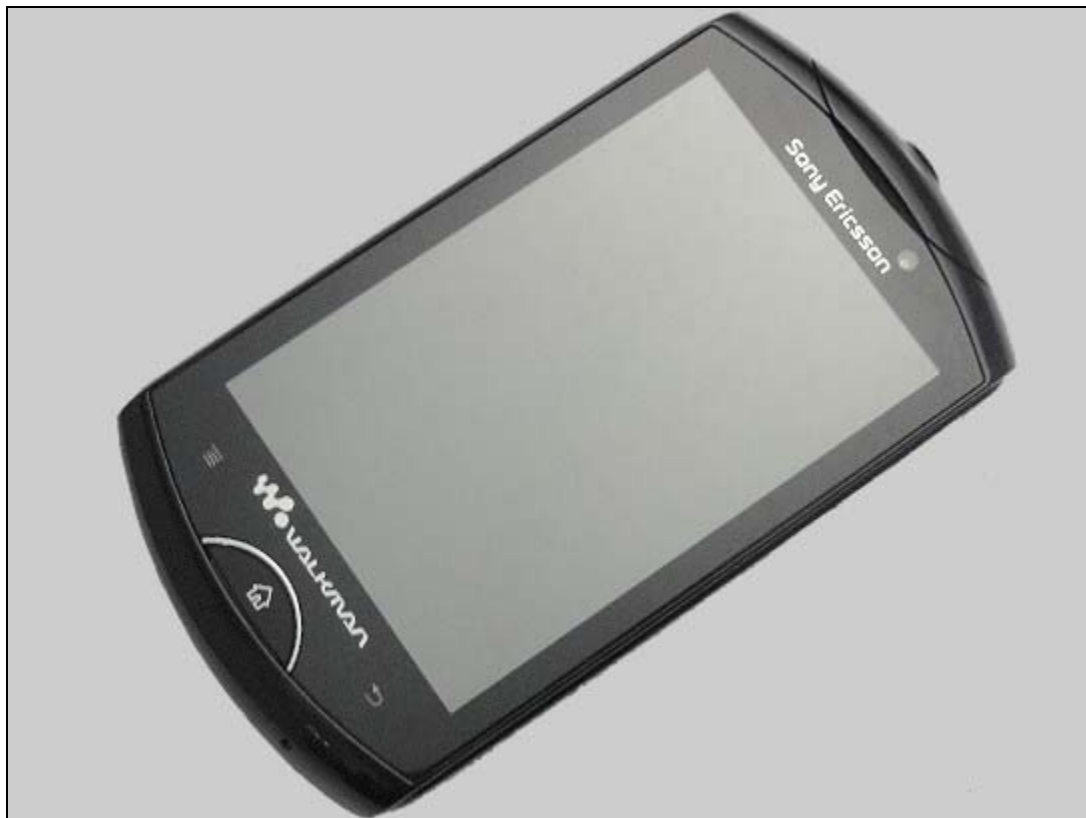
4.27	Key Home.....	50
4.28	Front Cover+TP+LCM Sponge assy .....	52
5	Reassembly.....	54
5.1	Assy Front Housing .....	54
5.2	Assy Metal Frame LCM and LCM TFT 3.2 HVGA.....	54
5.3	PCBA .....	56
5.4	CMMB Antenna.....	58
5.5	Assy Housing Rear .....	59
5.6	Battery .....	62
5.7	Assy Housing Battery .....	62
6	Revision History .....	63

***For general information about mechanical repair related issues, refer to  
1220 – 1333: Generic Repair Manual – mechanical***



# 1 Exterior Views

## 1.1 WT18i



## 2 Tools

### SPECIAL TOOLS

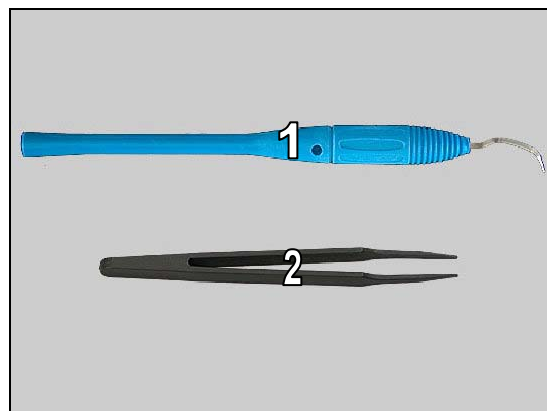
1. Torque Screwdriver
2. Bits (T5)
3. Bits (T6)
4. Front Opening Tool
5. Flex Film Assembly Tool
6. Guitar Pick
7. Camera Removal Tool



**For part no's on the tools above, refer to the 'Tools Catalogue/Matrix'!**

### STANDARD TOOLS

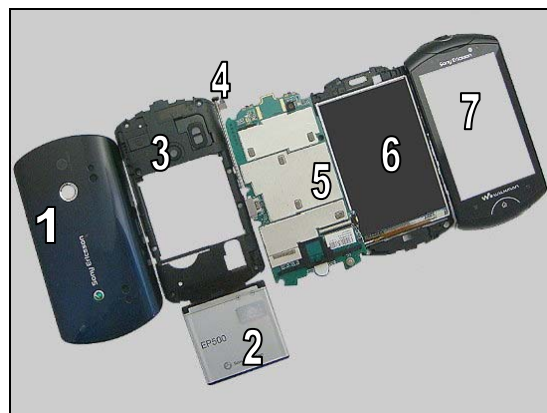
1. Dentist Hook (curve-shape)
2. Tweezers (ESD-safe & non-metallic)



## 3 Disassembly

The disassembly is done in the following order.

1. Assy Housing Battery
2. Battery
3. Assy Housing Rear
4. CMMB Antenna
5. PCBA
6. Assy Metal Frame LCM and LCM TFT 3.2 HVGA
7. Assy Front Housing



### 3.1 Assy Housing Battery

Insert the Front Opening Tool shown in photo to open the Assy Housing Battery.



Remove the Assy Housing Battery.



Separate the Assy Housing Battery.



## Disassembly

### 3.2 Battery

Insert the Front Opening Tool to open the Battery.



Remove the Battery.



### 3.3 Assy Housing Rear

Remove these four screws M1.6\*5.8mm by using a screwdriver with T6 bits.



Remove these four screws M1.4\*4mm by using a screwdriver with T5 bits.





## Disassembly

There are four hooks.



Use the Front Opening Tool to open two hooks at bottom side.



Use the Front Opening Tool to open two hooks at top side.



Remove the Assy Housing Rear as arrow shown.





## Disassembly

Remove the RF Rubber from PCBA.



Separate the Assy Housing Rear and RF Rubber.

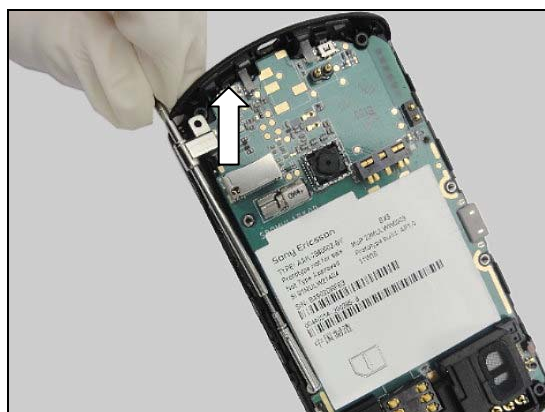


### 3.4 CMMB Antenna

Pull out the CMMB Antenna.



Remove the CMMB Antenna.



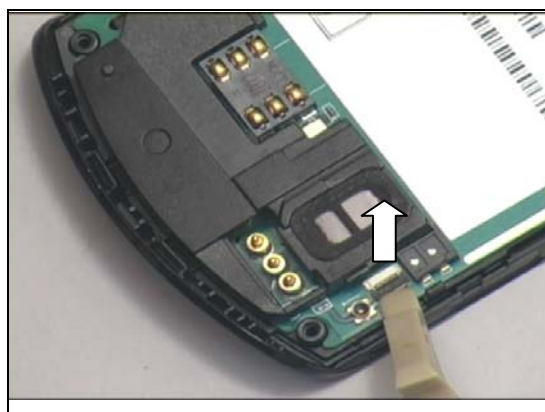
## Disassembly

Separate the CMMB Antenna.

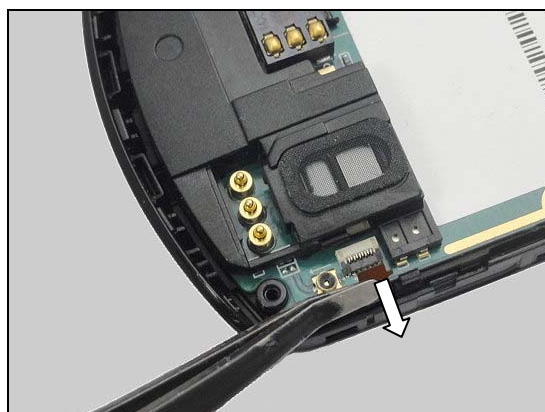


### 3.5 PCBA

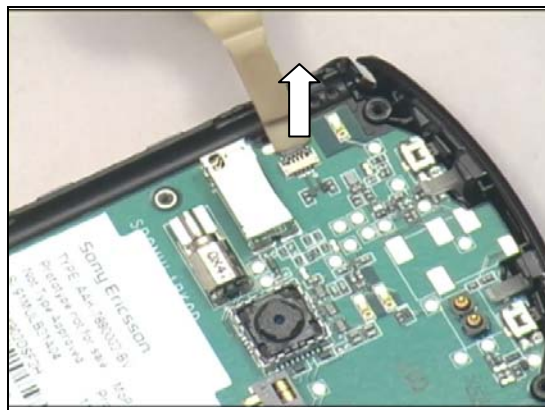
Open the Conn FPC 9p by Front opening tool.



Pull out the Touch Panel FPC by Flex Film Assembly Tool.

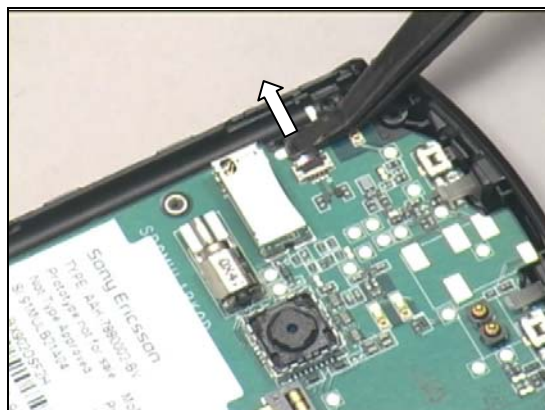


Open the Conn FPC 4p by Front opening tool.



## Disassembly

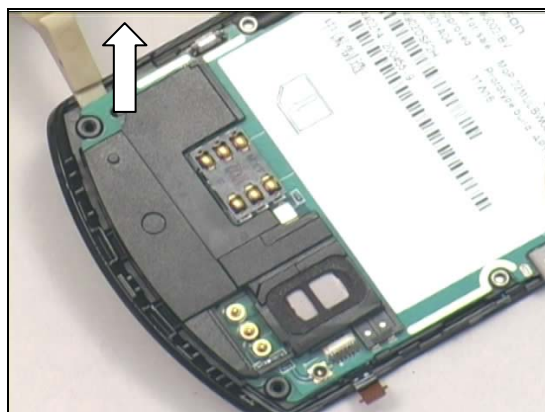
Pull out the Side key FPC by Flex Film Assembly Tool.



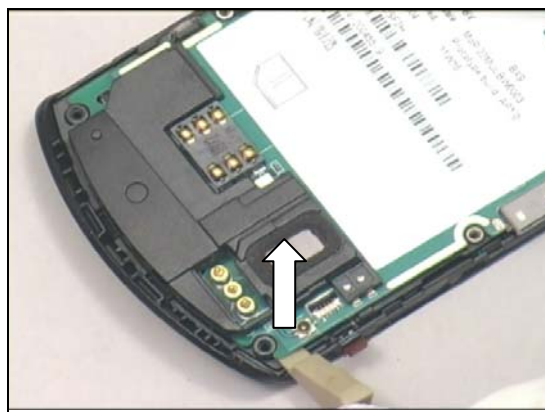
There are 3 hooks to fix the PCBA.



Open the PCBA hook by Front opening tool.



Open the other side hook by Front opening tool.



## Disassembly

Hold the PCBA bottom side.

**Attention: Do not damage the top ring.**



Pull out the PCBA from top ring toward the bottom side.

**Attention: Do not damage the top ring.**



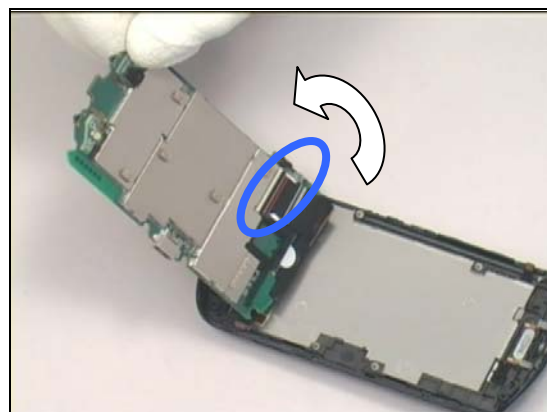
Turn up PCBA Top side while holding Bottom side.

**Attention: LCM FPC is still connected.**



Put the PCBA in vertical direction.

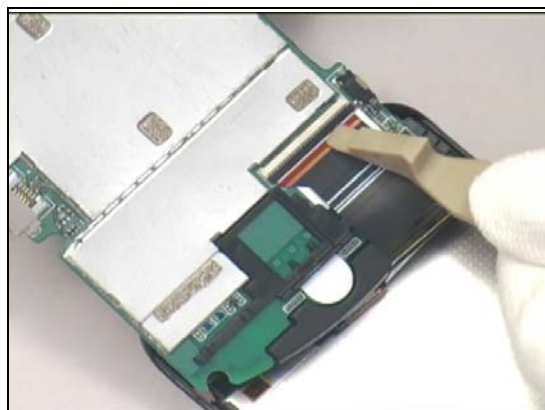
**Attention: LCM FPC is still connected.**



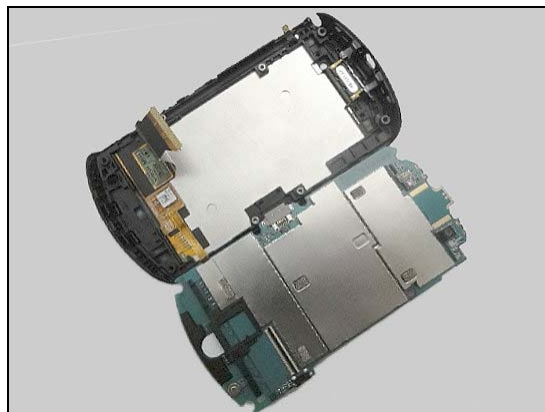


## Disassembly

Open the ZIF connector by Front opening tool to release LCM FPC.

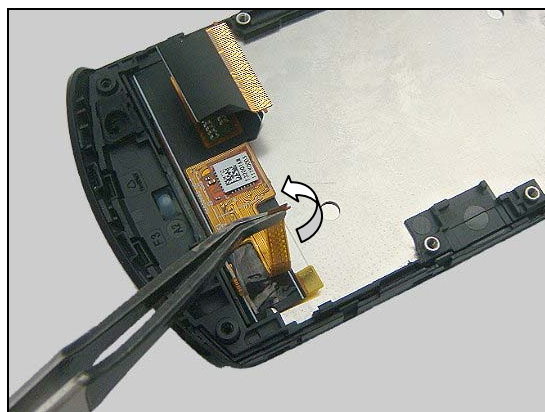


Remove the PCBA.

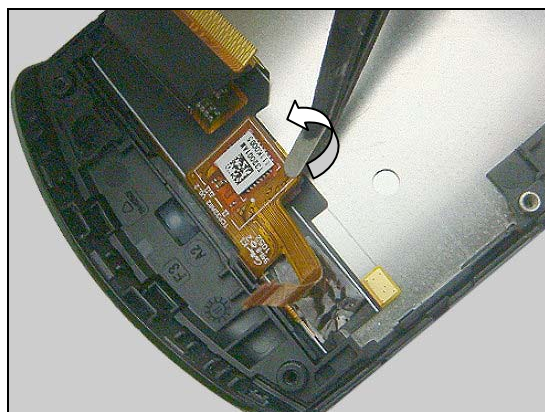


### 3.6 Assy Metal Frame LCM and LCM TFT 3.2 HVGA

Peel off the tail of the Touch Panel FPC.

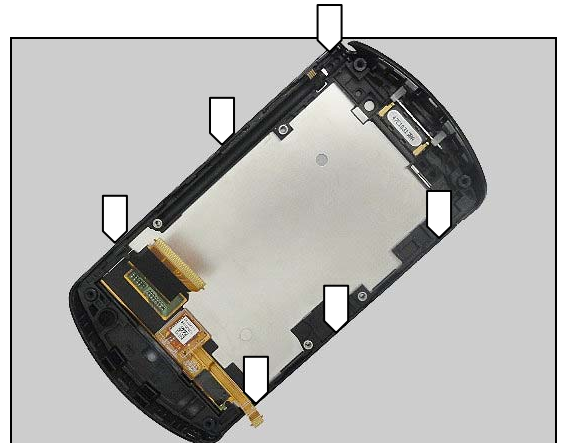


Peel off the Touch Panel FPC from Assy LCM frame.



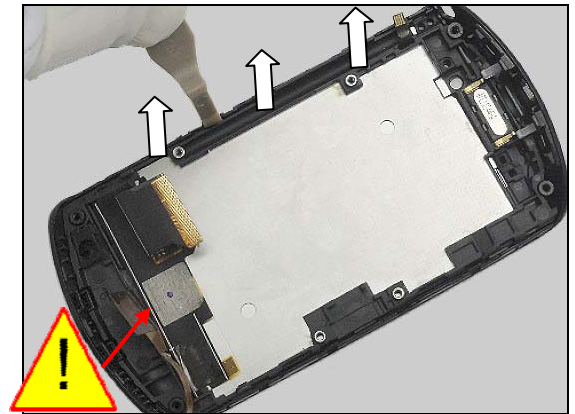
## Disassembly

There are 6 hooks on the Assy Metal Frame LCM.

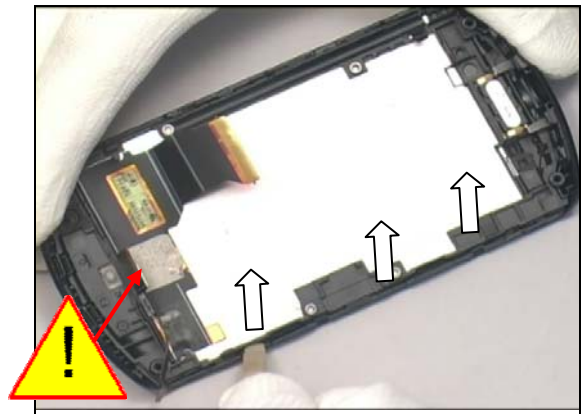


Open this side hooks by Front opening tool.

**Attention: Do not damage the touch panel FPC.**

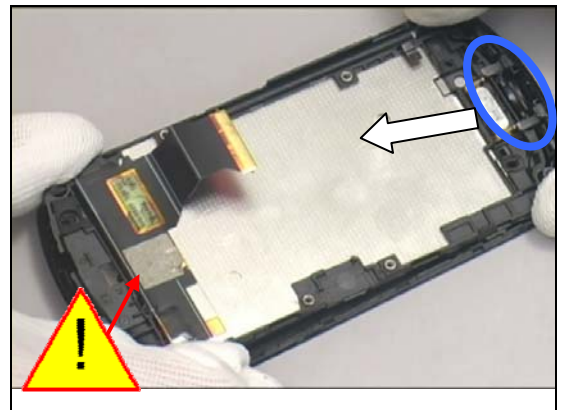


Open the other side hooks.



Hold LCM frame bottom side and Pull its top side out from top ring

**Attention: Do not damage the Touch Panel FPC.**





## Disassembly

Carefully remove the Touch Panel FPC through its hole.

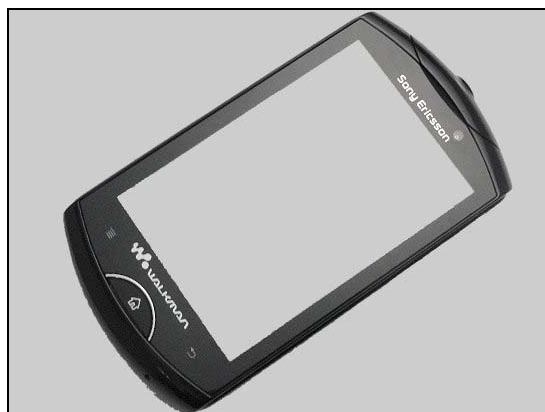


Remove the Assy Metal Frame LCM and LCM TFT 3.2 HVG.



### 3.7 Assy Front Housing

Remove the Assy Front Housing.



## 4 Replacement

### 4.1 Assy Housing Battery

*Follow the 3.1 Disassembly instructions!*

Prepare the new Assy Housing Battery.

*Follow the 5.7 Reassembly instructions!*

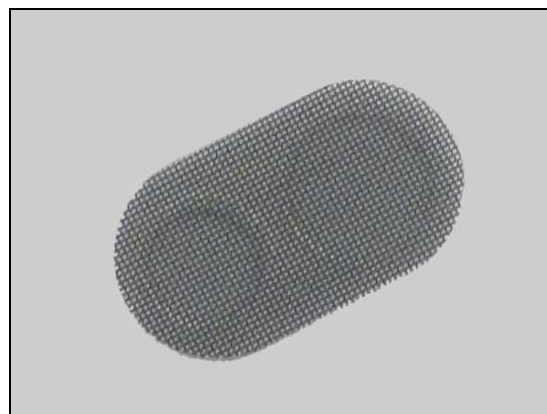


### 4.2 Mesh Speaker Battery Cover

*Follow the 3.1 Disassembly instructions!*

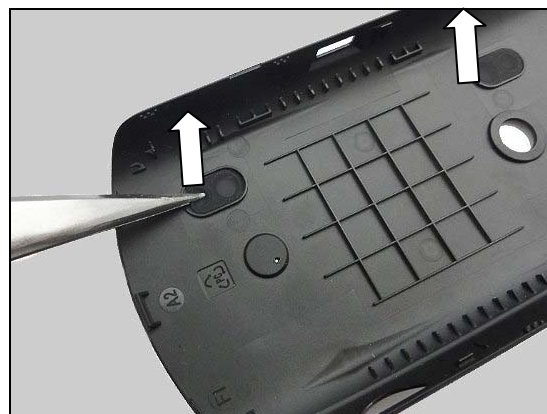
Carry out the installation as described below.

*Follow the 5.7 Reassembly instructions!*



#### REMOVAL

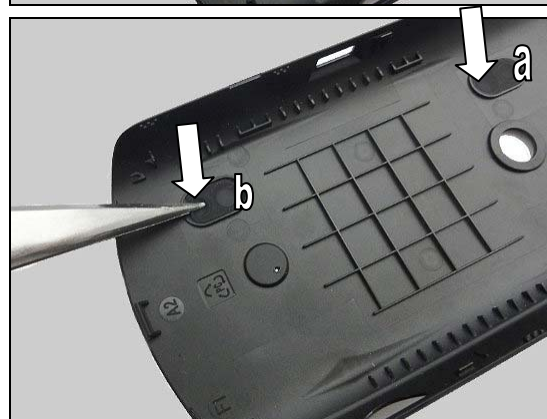
Use the tweezers to remove the Mesh Speaker Battery Cover from the Assy Housing Battery.



#### INSTALLATION

Attach the Mesh Speaker Battery Cover onto the Assy Housing Battery.

**Attention: In White phones, white mesh should be attached on the top hole (a) and purple mesh should be attached on the bottom hole (b).**



## Replacement

### 4.3 Key Side

*Follow the 3.1 Disassembly instructions!*

*Carry out the replacement as described below.*

*Follow the 5.7 Reassembly instructions!*

#### REMOVAL

Use the tweezers to remove the Key Side from the Assy Housing Battery.



#### INSTALLATION

Use the tweezers to attach the Key Side on the Assy Housing Battery.

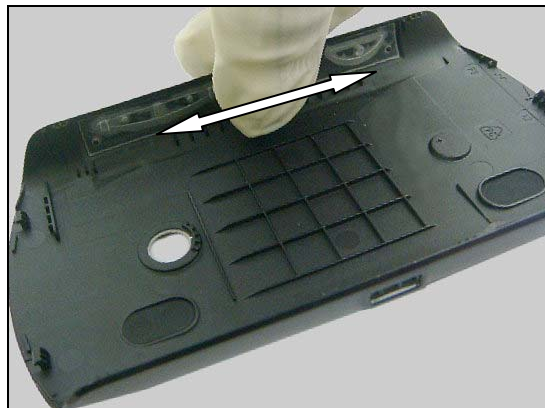


The orientation points on the Battery Cover are shown in the figure.



## Replacement

Gently press the rubber to fix the Key Side.



### 4.4 Rubber RF

*Follow the 3.1 – 3.2 Disassembly instructions!*

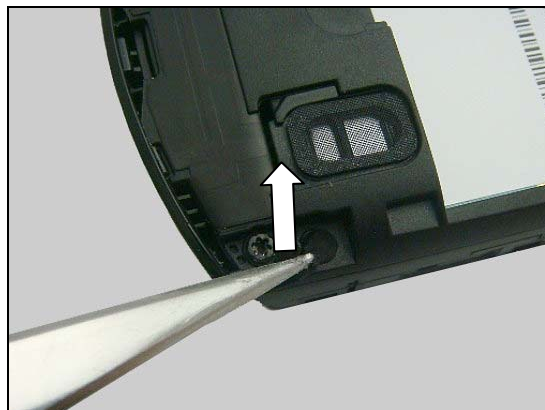
*Carry out the replacement as described below.*

*Follow the 5.6 – 5.7 Reassembly instructions!*



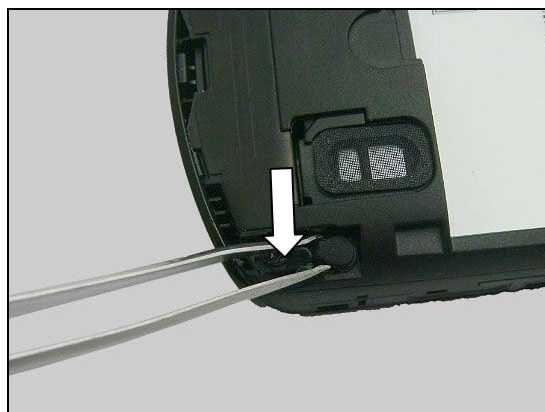
#### REMOVAL

Use the tweezers to remove the RF Rubber from the Assy Housing Rear.



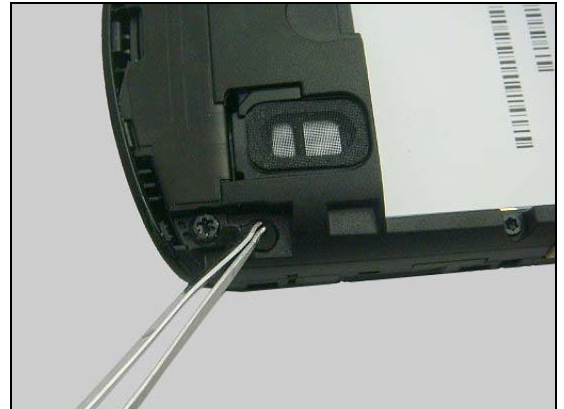
#### INSTALLATION

Use the tweezers to put the RF Rubber onto the Assy Housing Rear.



## Replacement

Use the tweezers to press the RF Rubber into the hole.



### 4.5 CONN Phone Jack 5PIN

*Follow the 3.1 – 3.3 Disassembly instructions!*

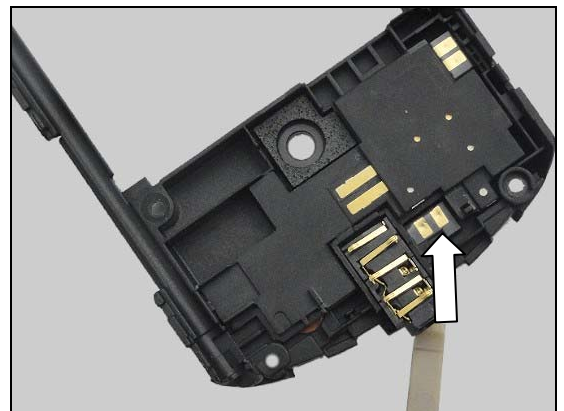
Carry out the replacement as described below.

*Follow the 5.5 – 5.7 Reassembly instructions!*

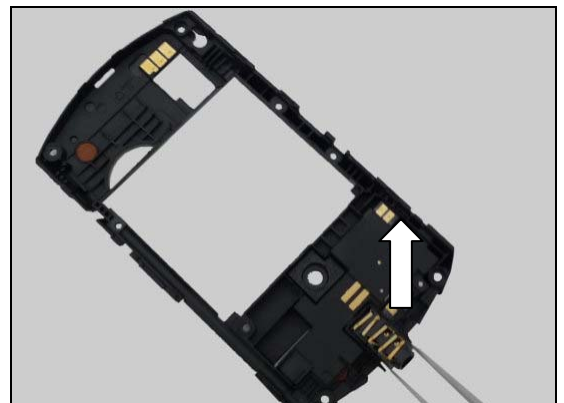


#### REMOVAL

Use the Front Opening Tool to lift up the CONN Phone Jack 5PIN from the Assy Housing Rear.



Use the tweezers to remove it.





## Replacement

### INSTALLATION

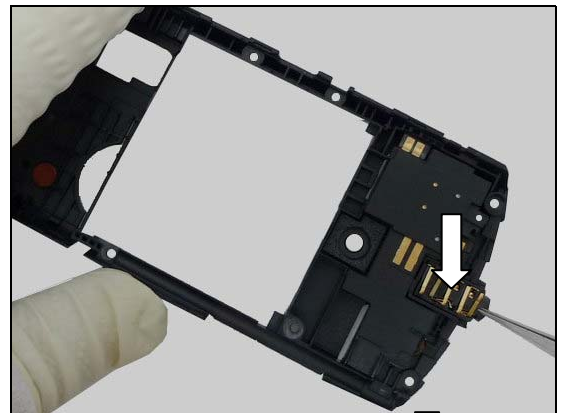
Use the tweezers to put the CONN Phone Jack 5PIN onto the Assy Housing Rear.

**Attention: Do not touch the pin.**



Use the Tweezers to press the CONN Phone Jack 5PIN.

**Attention: Do not touch the pin.**



## 4.6 Water Intrusion Label

### INSPECTION

To check whether the Water Intrusion Label has been activated (red color).

If activated

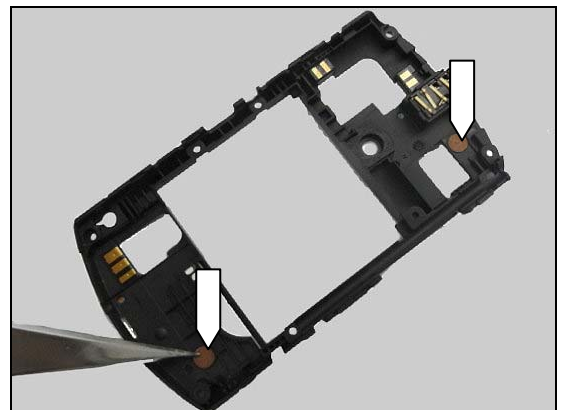
*Follow the 3.1 – 3.3, 4.9 Disassembly instructions! Carry out the installation as described below.*

*Follow the 4.9, 5.5 – 5.7 Reassembly instructions!*



### REMOVAL

Use the tweezers to pick up the Water Indicator from the Assy Housing Rear.



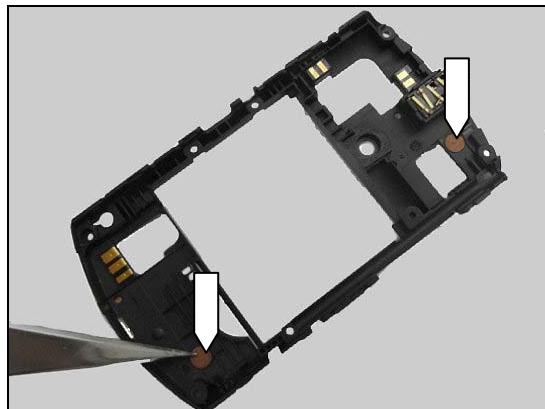


## Replacement

### INSTALLATION

Use the tweezers to put the Water Indicator onto the Assy Housing Rear.

**Attention: White side should be faced down.**



### 4.7 Assy Housing Rear

*Follow the 3.1 – 3.3 Disassembly instructions!*

*Follow 4.5, 4.9 removal instructions;*

Prepare the new Assy Housing Rear.

*Follow 4.5, 4.9 installation instructions;*

*Follow the 5.5 – 5.7 Reassembly instructions!*



### 4.8 CMMB Antenna

*Follow the 3.1 – 3.4 Disassembly instructions!*

Prepare the new CMMB Antenna.

*Follow the 5.4 – 5.7 Reassembly instructions!*



### 4.9 Speaker Box Top

*Follow the 3.1 – 3.3 Disassembly instructions!*

*Carry out the installation as described below.*

*Follow the 5.5– 5.7 Reassembly instructions!*



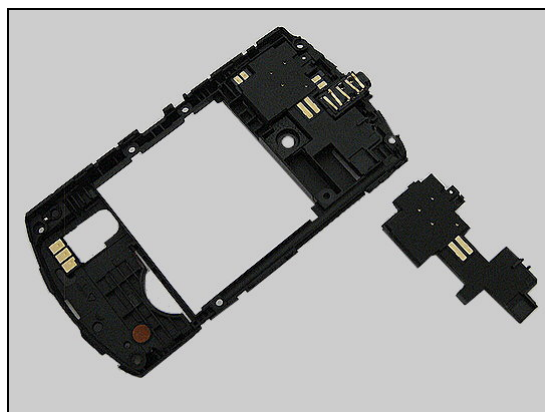
## Replacement

### REMOVAL

Use the Front opening tool to press the Speaker Box Top.

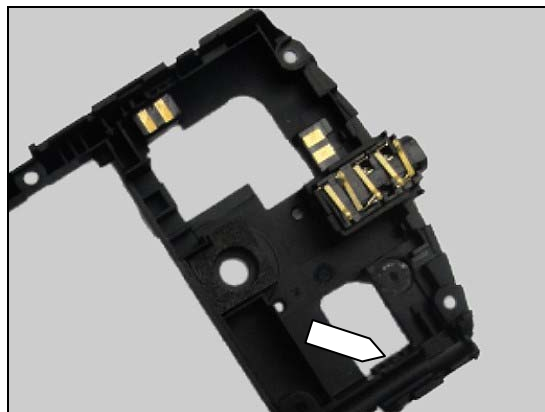


Remove the Speaker Box Top.

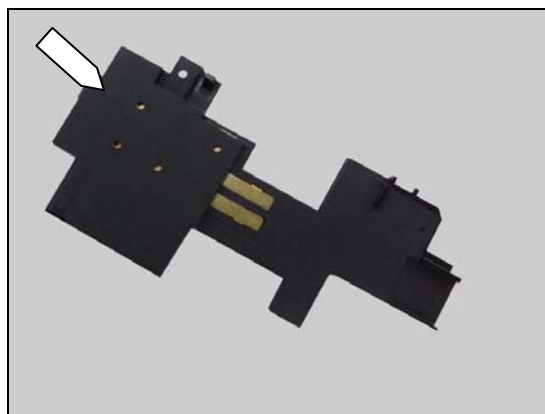


### INSTALLATION

There is one hook on the Assy Housing Rear.



There is one hook on the Speaker Box Top.



## Replacement

Put the Speaker Box Top on the Assy Housing Rear. Press the Speaker Box Top into the Assy Housing Rear.



The Speaker Box Top has been put on the Assy Housing Rear.



### 4.10 Speaker Box Bottom

*Follow the 3.1 – 3.5 Disassembly instructions!*

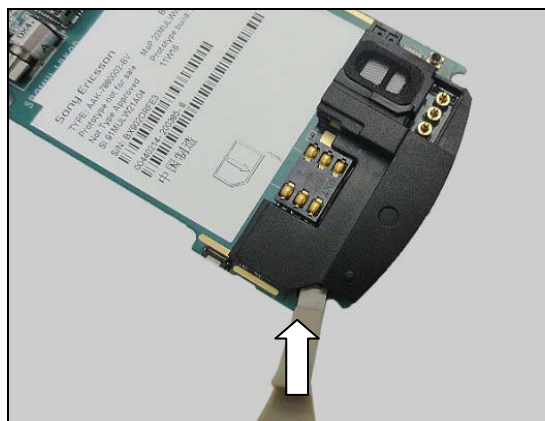
*Carry out the installation as described below.*

*Follow the 5.3– 5.7 Reassembly instructions!*



### REMOVAL

Use the Front Opening Tool to lift up the Speaker Box Bottom.



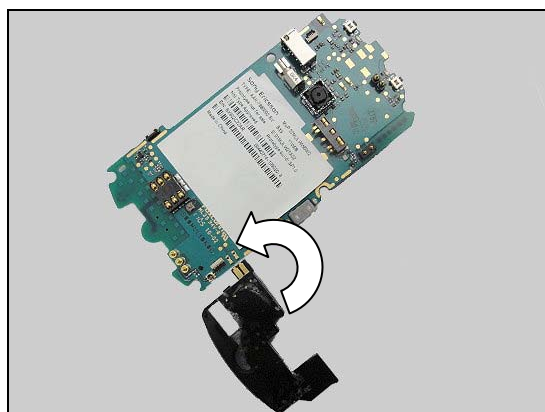
## Replacement

Remove the Speaker Box Bottom.

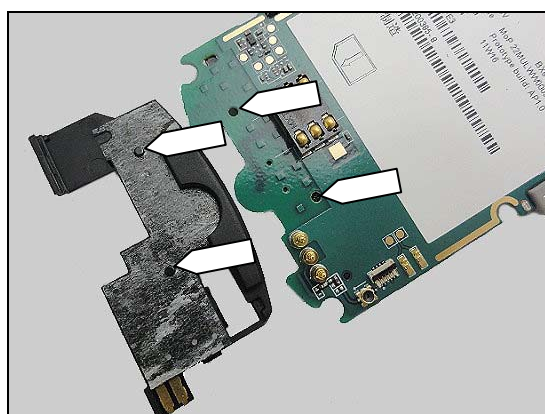


### INSTALLATION

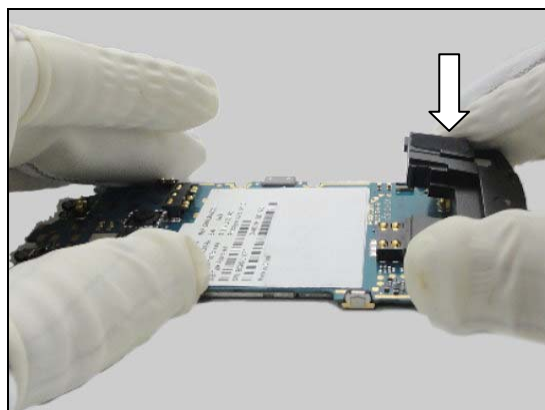
There is a Adhesive on bottom speaker box on the Speaker Box Bottom.



The orientation points on the Speaker Box Bottom and the PCBA are shown in the figure.



Put the Speaker Box Bottom onto the PCBA.



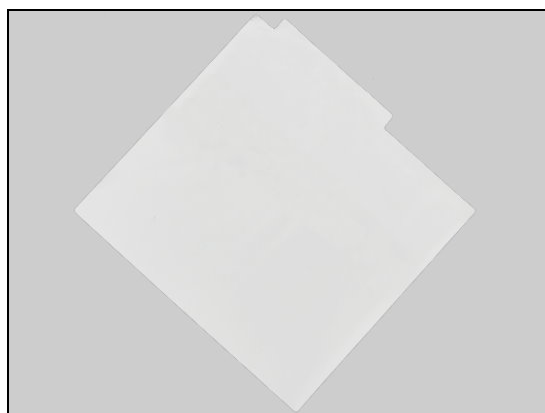
## Replacement

The Speaker Box Bottom is put on the PCBA.



### 4.11 Core Unit Label

*Follow the 3.1 – 3.2 Disassembly instructions!*  
*Carry out the replacement as described below.*  
*Follow the 5.6 – 5.7 Reassembly instructions!*



#### REMOVAL

Read the old Core Unit Label and/or write the information into the 'LabelMake' program before removal.  
 Carefully remove the Label by using the tweezers start from right-top corner.



#### INSTALLATION

Check that the proper label format is loaded in the Zebra printer and write a new Label by using the 'LabelMake' software.  
 The Label has to be positioned inside the 'golden' frame as indicated by the pointers.





## Replacement

Place the new Core Unit Label as shown in the adjacent picture.

**One label only is allowed!**



### 4.12 Gasket Sponge SIM

*Follow the 3.1 – 3.3 Disassembly instructions!*

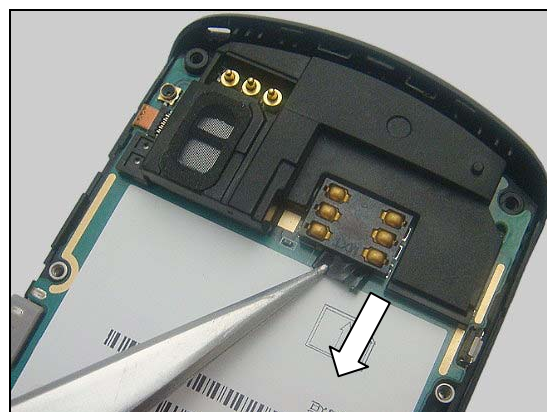
Carry out the replacement as described below.

*Follow the 5.5 – 5.7 Reassembly instructions!*



#### REMOVAL

Use the tweezers to pull out the Gasket Sponge SIM.



Remove the Gasket Sponge SIM.

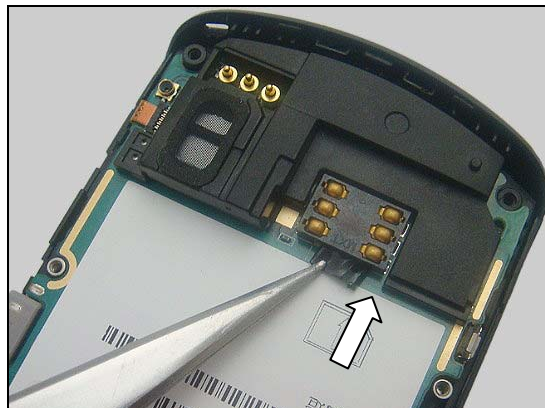




## Replacement

### INSTALLATION

Use the tweezers to stuff the Gasket Sponge SIM under the Card Conn SIM.



### 4.13 Mylar Metal Frame LCM

*Follow the 3.1 – 3.5 Disassembly instructions!*

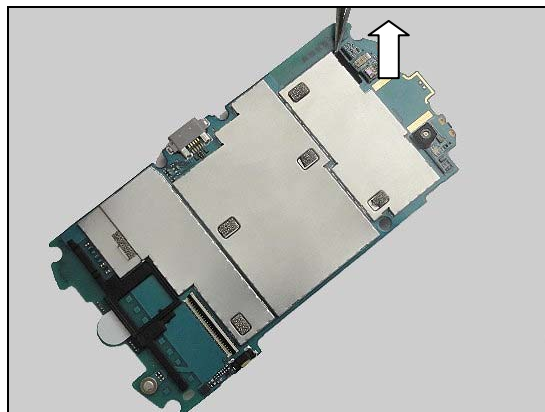
Carry out the replacement as described below.

*Follow the 5.3 – 5.7 Reassembly instructions!*

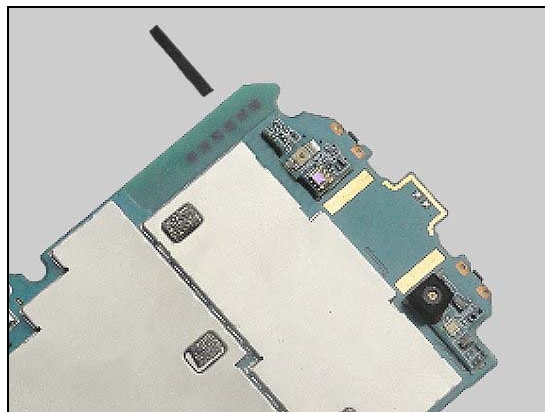


### REMOVAL

Use the tweezers to remove the Mylar Metal Frame LCM from the PCBA.



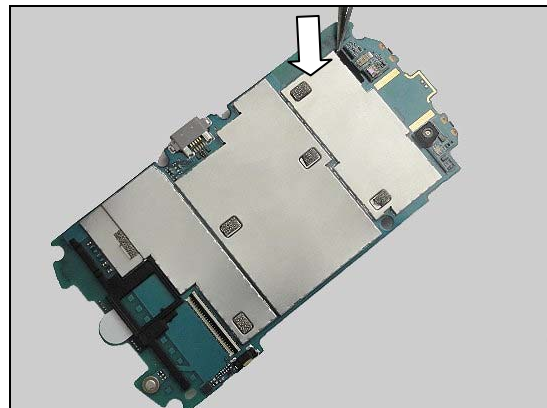
Remove the Mylar Metal Frame LCM.



## Replacement

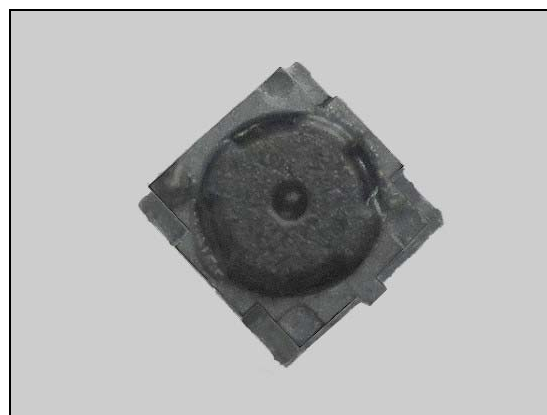
### INSTALLATION

Use the tweezers to put the Mylar Metal Frame LCM onto the PCBA.



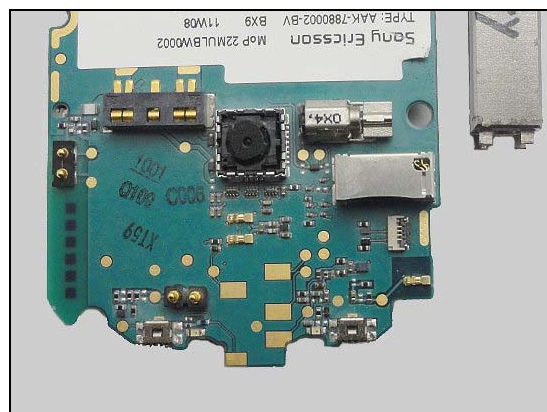
### 4.14 CAM 3M FF QXGA

*Follow the 3.1 – 3.3 Disassembly instructions!*  
Carry out the replacement as described below.  
*Follow the 5.5 – 5.7 Reassembly instructions!*



### REMOVAL

**Note the orientation of the blades on the Camera Removal Tool in relation to the position of the camera socket!**



Camera Removal Tool.



## Replacement

Insert the Camera Removal Tool into the camera socket shown in the picture.

**Attention: Do not damage the edge of CAM 3M FF QXGA.**

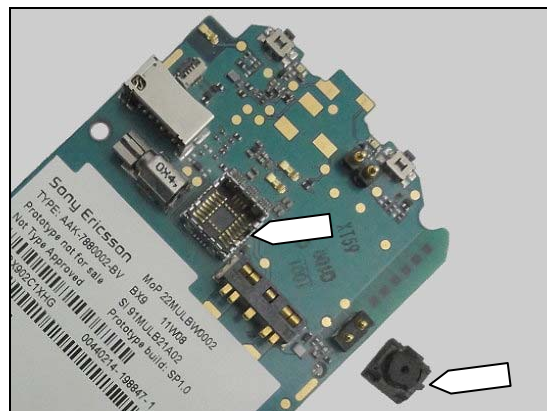
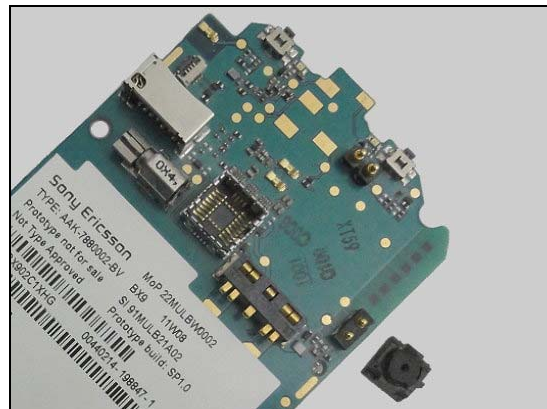
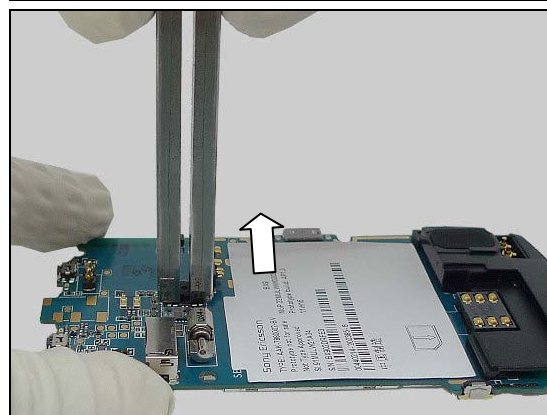
Use the Camera Removal Tool to remove it straightly.

Remove it.

## INSTALLATION

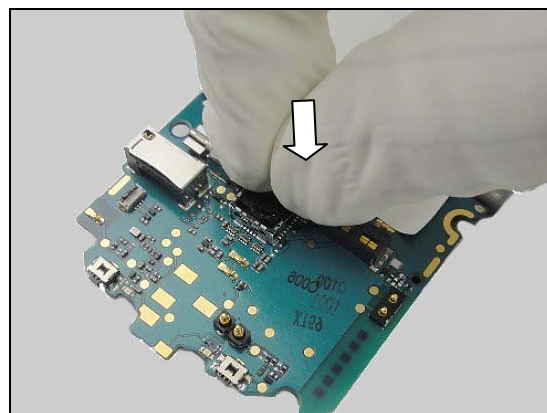
Pay attention on the direction of CAM 3M FF QXGA and the camera socket.

**Attention: The bulge of CAM 3M FF QXGA and the recess of the camera socket must be the same direction.**



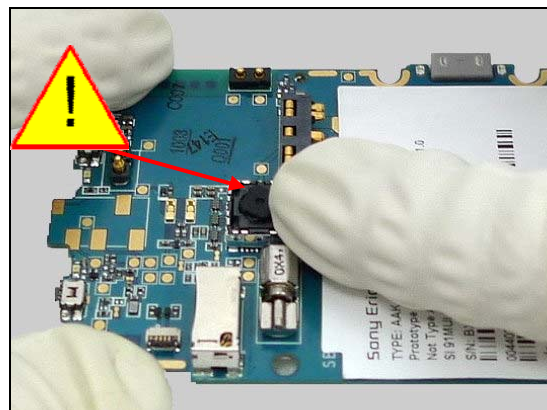
## Replacement

Place the CAM 3M FF QXGA inside and keep it be horizontal to the socket.



Press with your fingers, without touching the camera lens, to the bottom of the socket.

**Attention: There will be a sound when you install the CAM 3M FF QXGA accurately.**

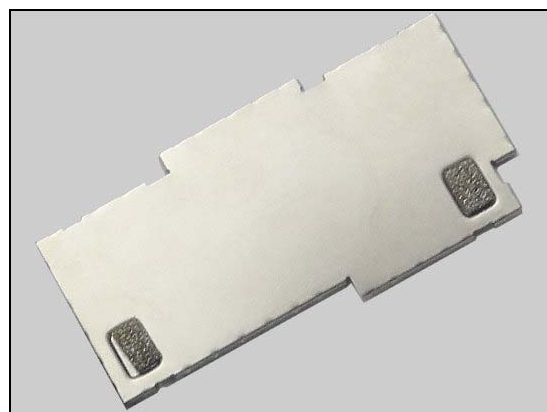


### 4.15 Shielding Cover BB 1

*Follow the 3.1 – 3.5 Disassembly instructions!*

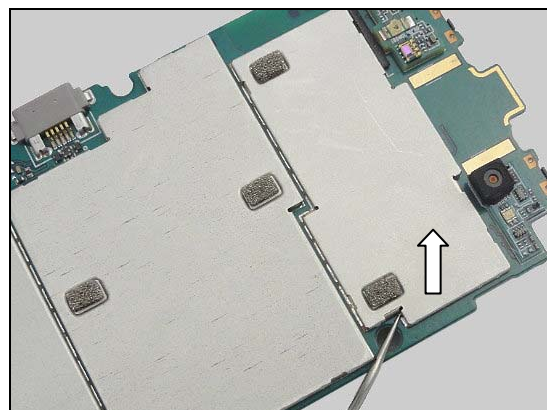
Carry out the replacement as described below.

*Follow the 5.3 – 5.7 Reassembly instructions!*



### REMOVAL

Insert the Dentist Hook into the corner of the Shielding Cover BB 1 and pull upwards to release it.

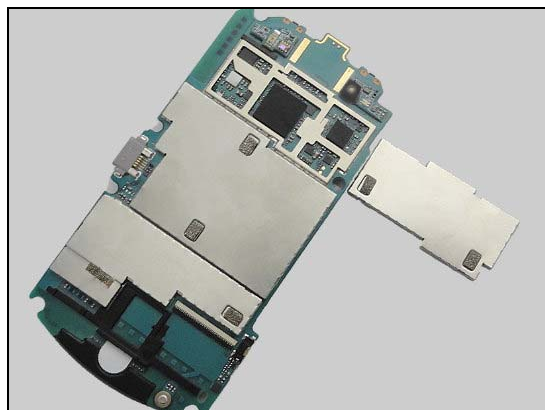




## Replacement

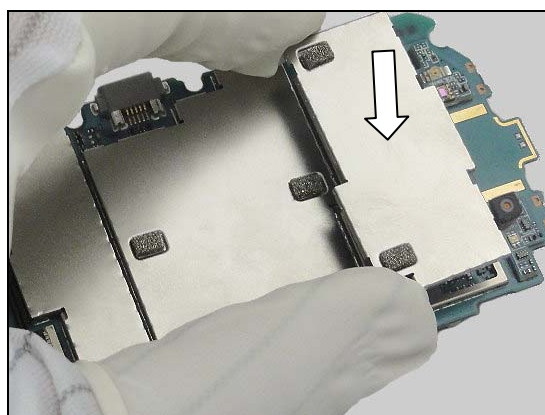
Remove the Shielding Cover BB 1.

**Scrap! Not to be reused!**

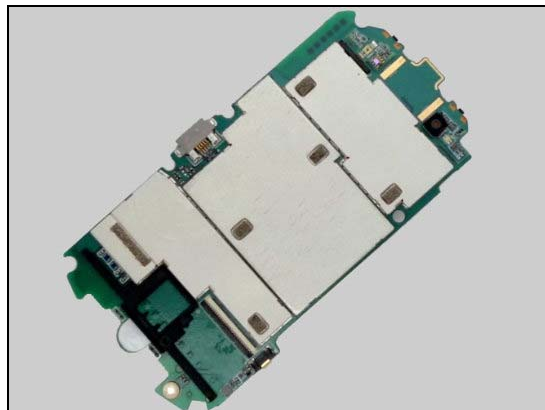


### INSTALLATION

Place Shielding Cover BB 1 on top of the Shielding Frame and press gently until it is securely attached.



Shielding Cover BB 1 has been placed.



## 4.16 Shielding Cover BB 2

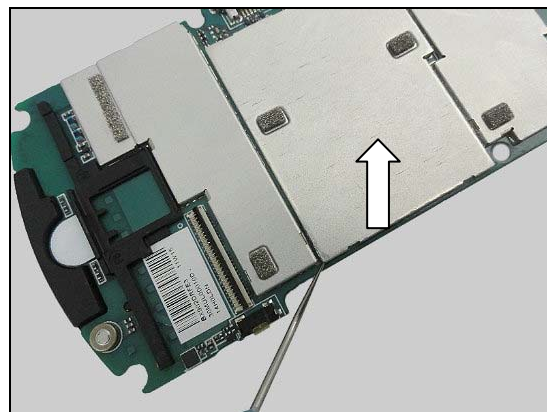
*Follow the 3.1 – 3.5 Disassembly instructions!*  
 Carry out the replacement as described below.  
*Follow the 5.3 – 5.7 Reassembly instructions!*



## Replacement

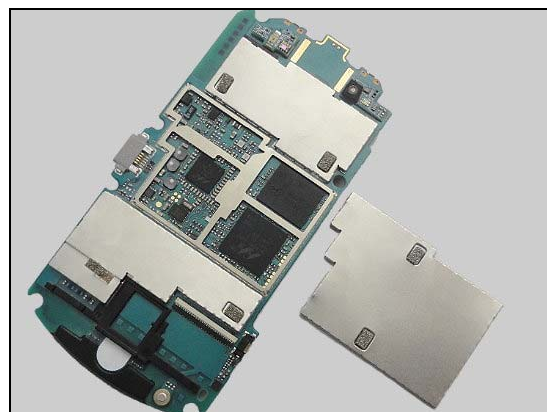
### REMOVAL

Insert the Dentist Hook into the corner of the Shielding Cover BB 2 and pull upwards to release it.



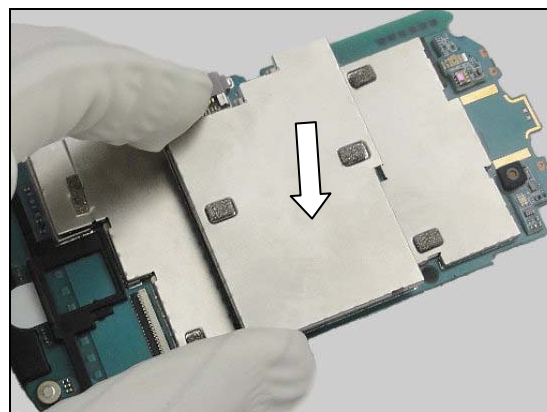
Remove the Shielding Cover BB 2.

**Scrap! Not to be reused!**

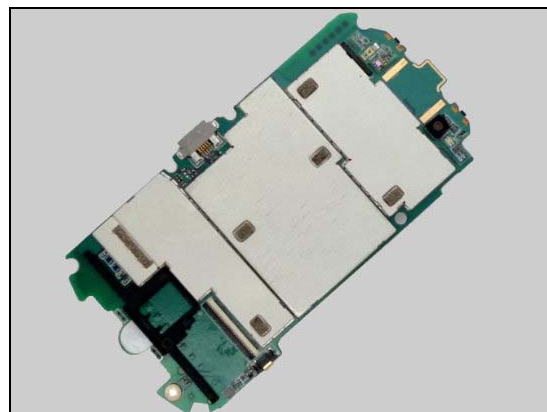


### INSTALLATION

Place Shielding Cover BB 2 on top of the Shielding Frame and press gently until it is securely attached.



Shielding Cover BB 2 has been placed.





## Replacement

### 4.17 Shielding Cover RF

*Follow the 3.1 – 3.5 Disassembly instructions!*

Carry out the replacement as described below.

*Follow the 5.3 – 5.7 Reassembly instructions!*

#### REMOVAL

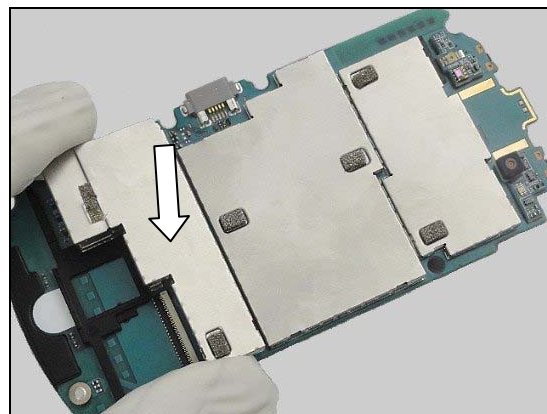
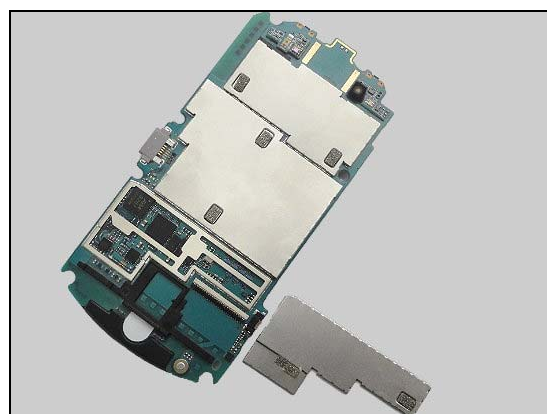
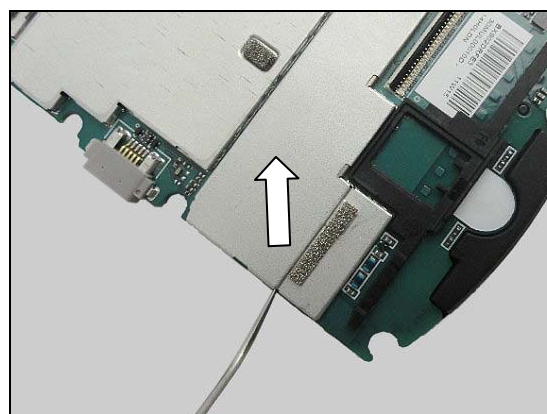
Insert the Dentist Hook into the corner of the Shielding Cover RF and pull upwards to release it.

Remove the Shielding Cover RF.

**Scrap! Not to be reused!**

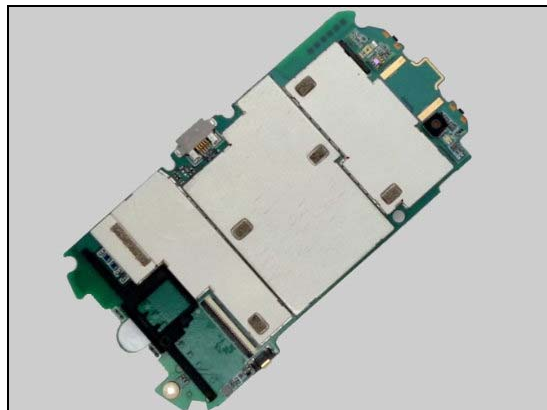
#### INSTALLATION

Place Shielding Cover RF on top of the Shielding Frame and press gently until it is securely attached.



## Replacement

Shielding Cover RF has been placed.



### 4.18 Rubber Front Camera

*Follow the 3.1 – 3.5 Disassembly instructions!*

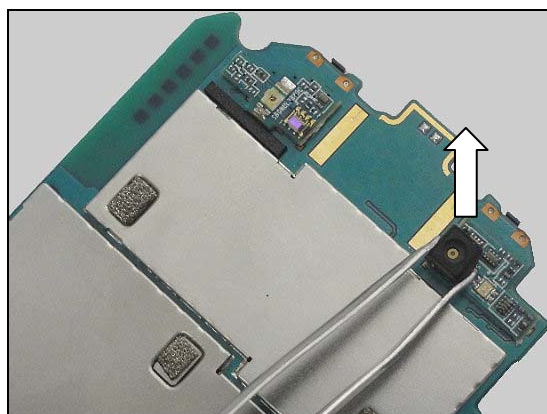
*Carry out the replacement as described below.*

*Follow the 5.3 – 5.7 Reassembly instructions!*

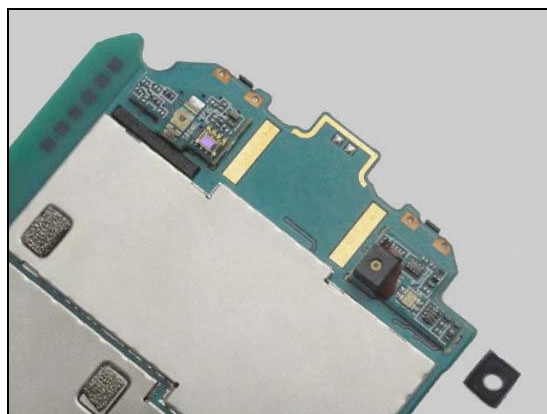


#### REMOVAL

Use the tweezers to pick up the Rubber Front Camera.



Remove the Rubber Front Camera.

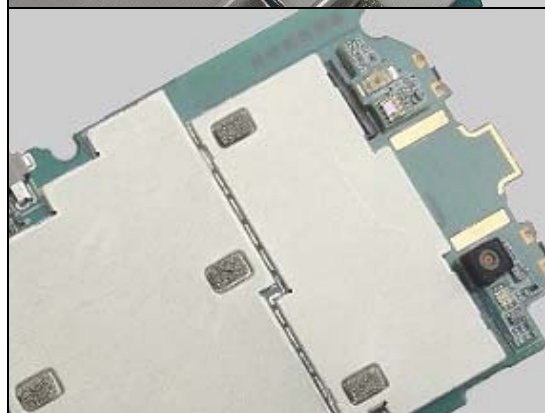
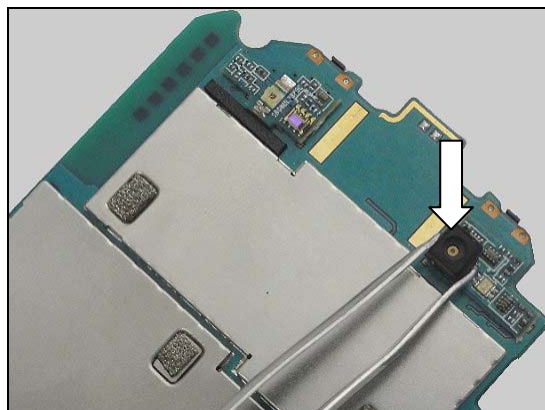


## Replacement

### INSTALLATION

Use the tweezers to put on the Rubber Front Camera.

Rubber Front Camera has been placed.

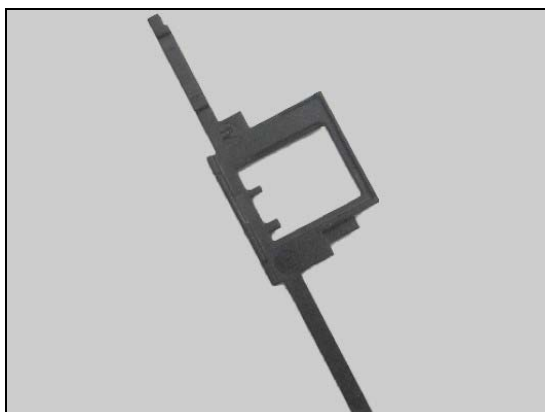


### 4.19 Assy Holder LCM Frame

*Follow the 3.1 – 3.5 Disassembly instructions!*

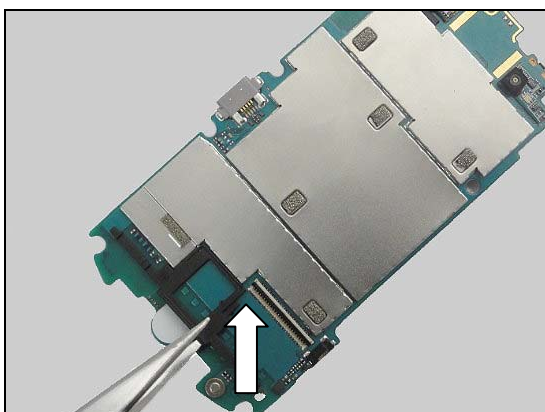
*Carry out the replacement as described below.*

*Follow the 5.3 – 5.7 Reassembly instructions!*



### REMOVAL

Use the tweezers to lift up the Assy Holder LCM Frame.



## Replacement

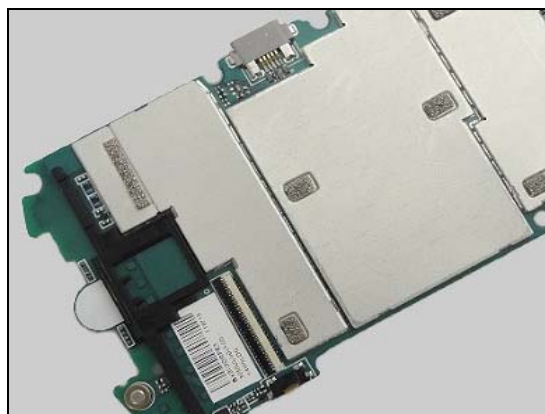
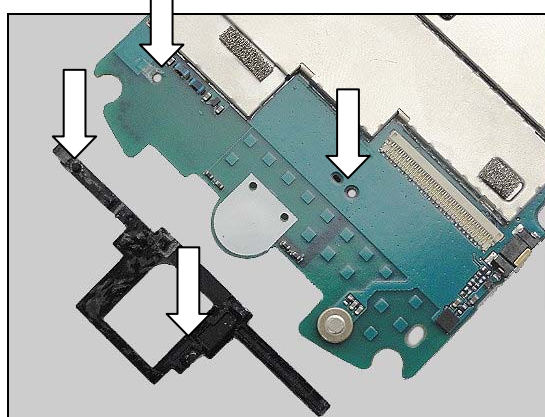
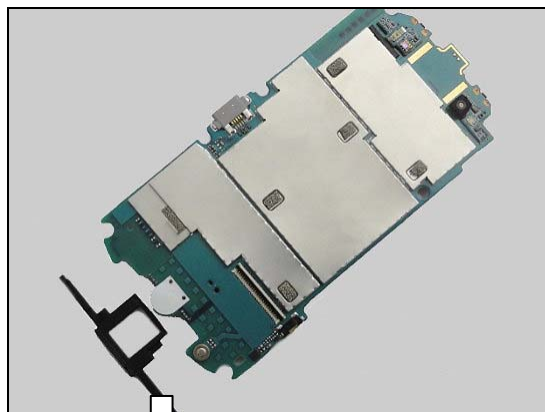
Remove the Assy Holder LCM Frame.

### INSTALLATION

Use the tweezers to put on the Assy Holder LCM Frame.

**Attention: There are each two holes on Assy Holder LCM Frame and PCBA for orientation.**

Assy Holder LCM Frame has been placed.



## 4.20 Dome Sheet Home Key

*Follow the 3.1 – 3.5, 4.18 Disassembly instructions*

*Carry out the replacement as described below.*

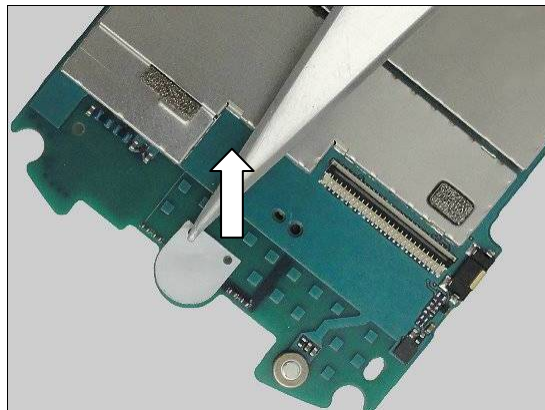
*Follow the 5.3 – 5.7. 4.18 Reassembly instructions!*





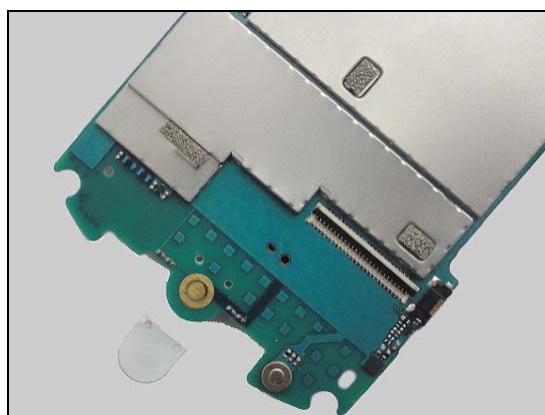
## Replacement

Use the tweezers to peel off the Dome Sheet Home Key.



Remove the Dome Sheet Home Key.

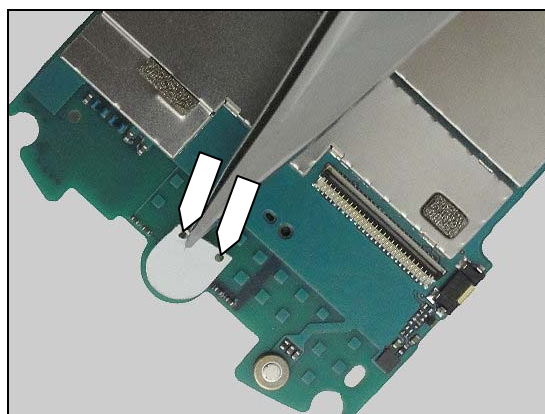
**Scrap! Not to be reused!**



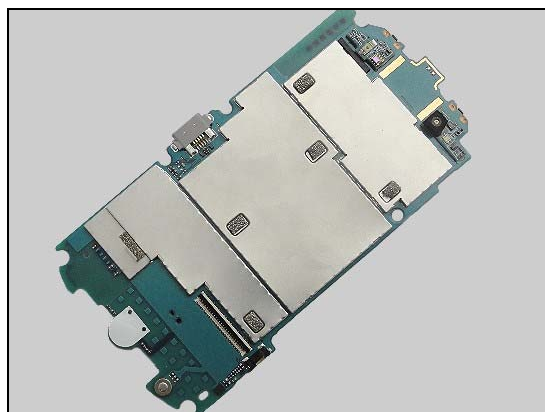
## INSTALLATION

Use the tweezers to put on the Dome Sheet Home Key.

**Attention: There are two holes on the Dome Sheet Home key and PCBA for orientation.**



Dome Sheet Home Key has been placed.





## Replacement

### 4.21 Receiver

*Follow the 3.1 – 3.5 Disassembly instructions!*

*Carry out the replacement as described below.*

*Follow the 5.3 – 5.7 Reassembly instructions!*

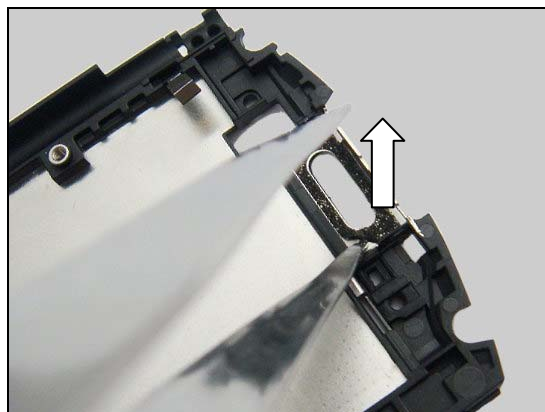
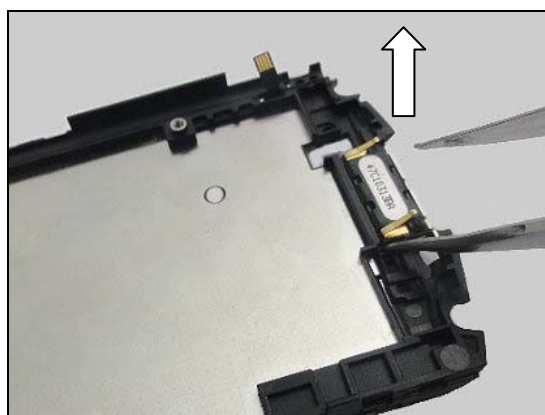
#### REMOVAL

Use the tweezers to lift up the Receiver.

Remove the Receiver.

Carefully clean the Sponge Receiver 2 on the Assy Metal Frame LCM.

**Scrap! Not to be reused!**



## Replacement

### INSTALLATION

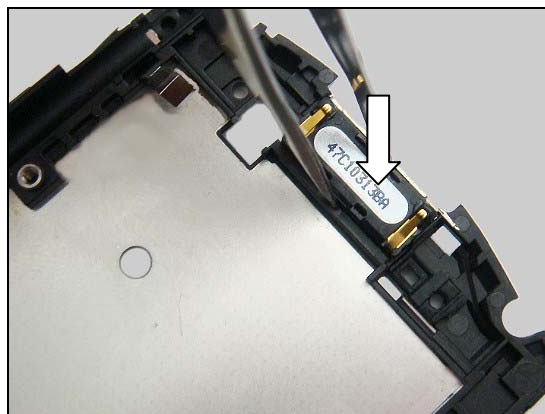
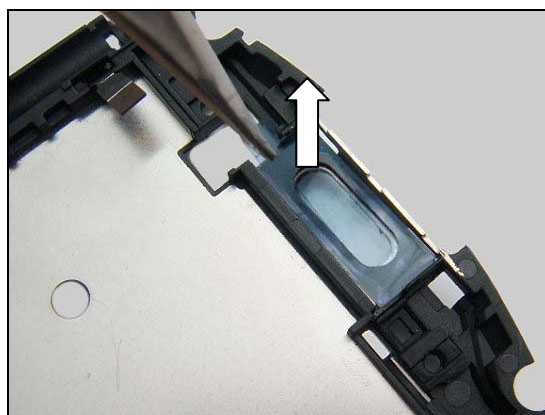
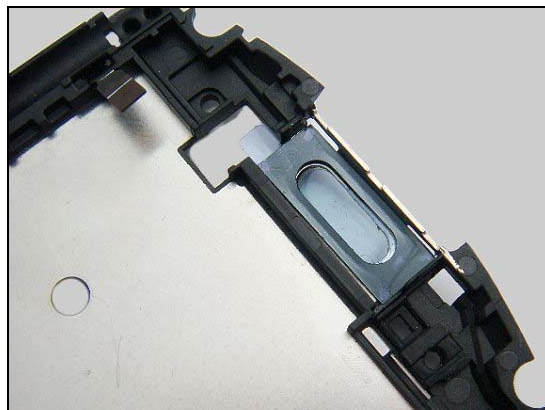
Stick new Sponge Receiver 2 on the Assy Metal Frame LCM.

Remove the protective film of the Sponge Receiver 2.

Prepare a new Receiver.

Put the Receiver on the Assy Metal Frame LCM.

**Attention: The pins of direction as shown.**



## Replacement

Use the tweezers to gently press the Receiver.

**Attention: Do not touch the pins of the Receiver.**



Receiver has been replaced.

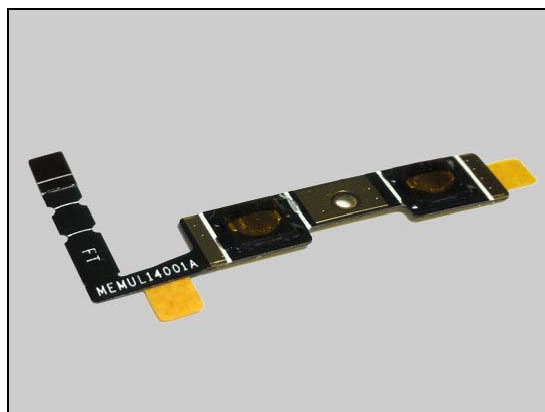


## 4.22 FPC Assy Volume Key

*Follow the 3.1 – 3.7 Disassembly instructions!*

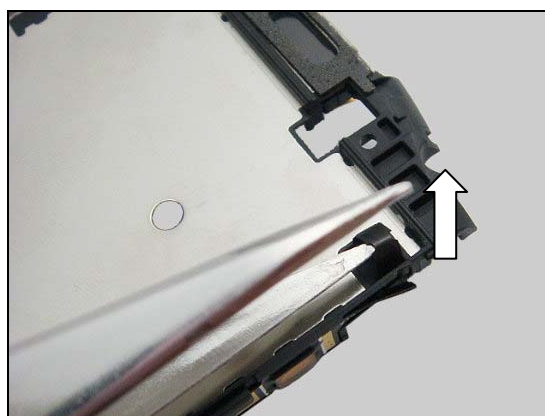
Carry out the replacement as described below.

*Follow the 5.1 – 5.7 Reassembly instructions!*



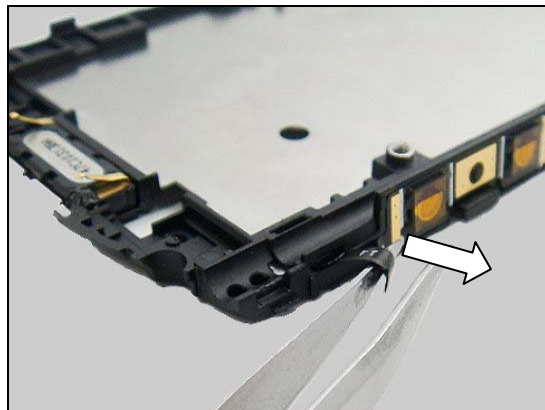
### REMOVAL

Use the tweezers to lift up the FPC Assy Volume Key.



## Replacement

Use the tweezers to pull out the FPC Assy Volume Key.



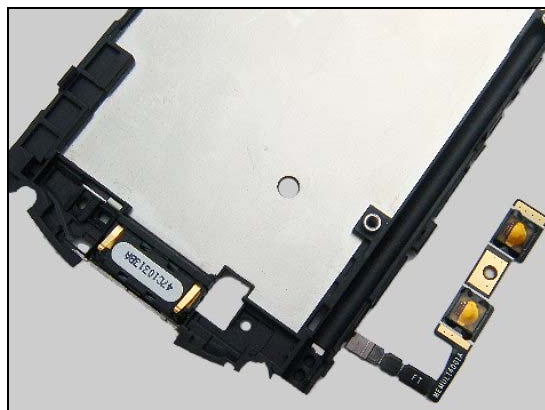
Release the FPC Assy Volume Key from the slit.



Use the tweezers to tear down the FPC Assy Volume Key.



Remove the FPC Assy Volume Key.

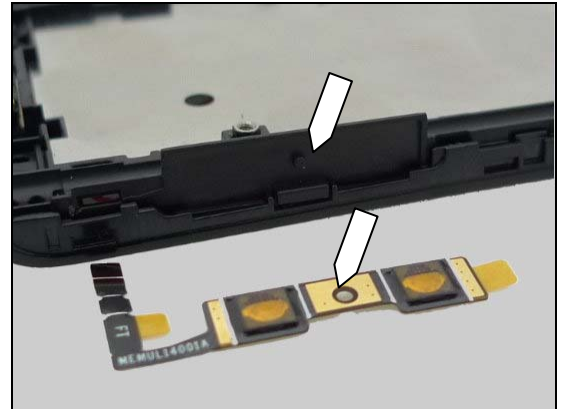




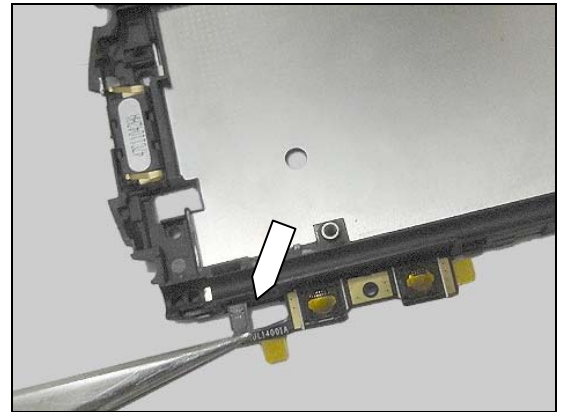
## Replacement

### INSTALLATION

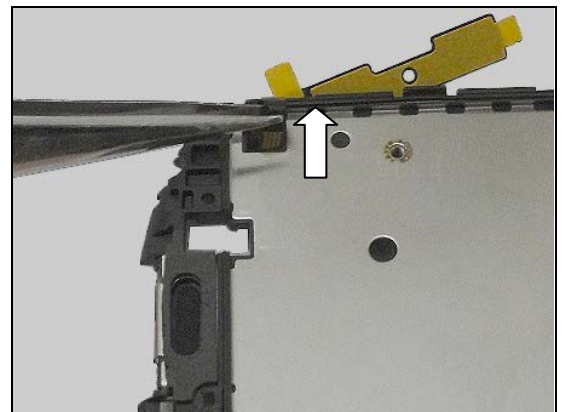
The hole of the FPC Assy Volume Key should be oriented to the small bulge on the Assy Metal Frame LCM.



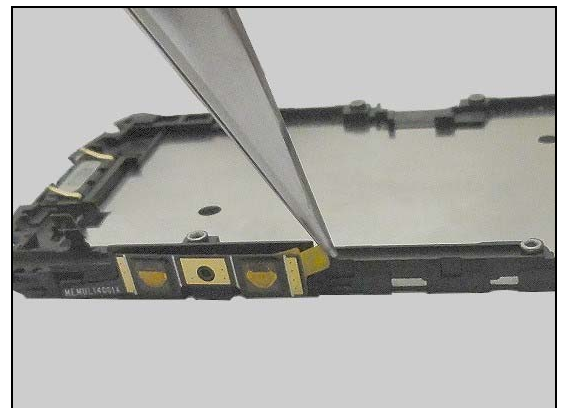
Use the tweezers to insert the tip of FPC Assy Volume Key into the slit of Assy Metal Frame LCM.



Turn over the Assy Metal Frame LCM. Use the tweezers to insert the tip of FPC Assy Volume Key into the gap of Assy Metal Frame LCM.



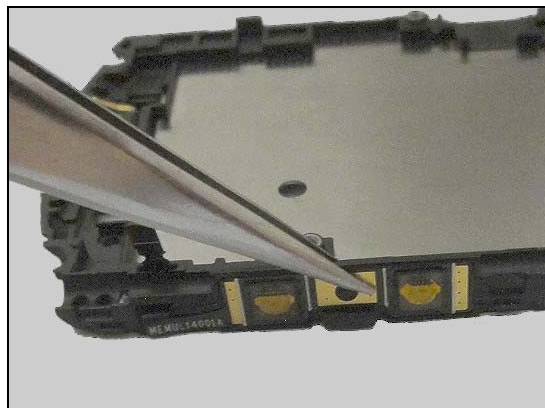
Use the tweezers to tear down the protective film.





## Replacement

Press down the FPC Assy Volume Key with the tweezers.



FPC Assy Volume Key has been placed.



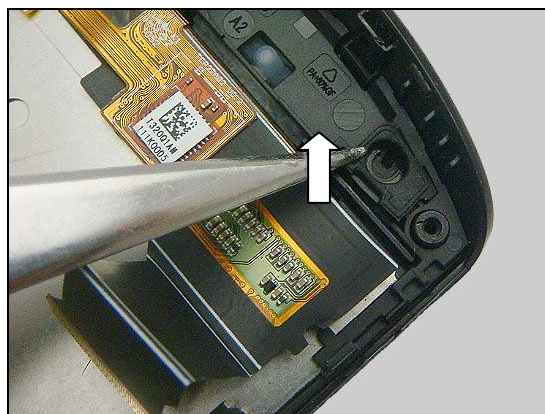
### 4.23 Rubber Mic

*Follow the 3.1 – 3.5 Disassembly instructions!*  
 Carry out the replacement as described below.  
*Follow the 5.3 – 5.7 Reassembly instructions!*



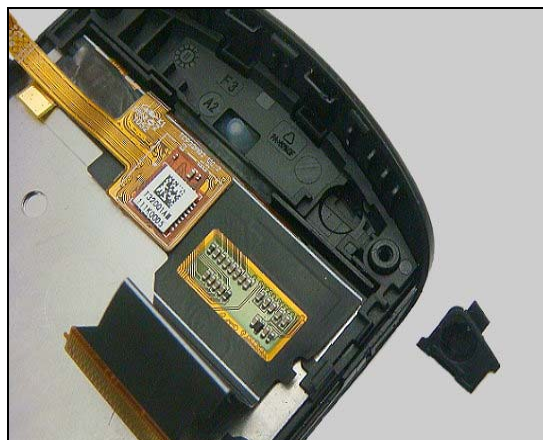
#### REMOVAL

Use the tweezers to pick up the Rubber Mic.



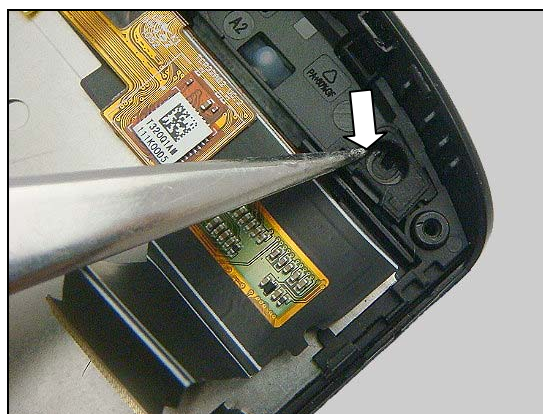
## Replacement

Remove the Rubber Mic.



### INSTALLATION

Use tweezers to put on the Rubber Mic.



Rubber Mic has been placed.



## 4.24 Rubber PROX sensor

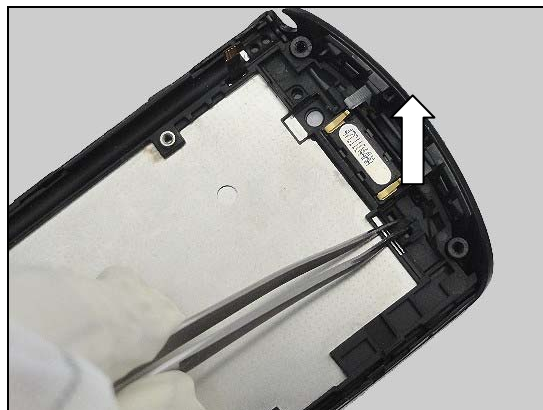
*Follow the 3.1 – 3.5 Disassembly instructions!*  
 Carry out the replacement as described below.  
*Follow the 5.3 – 5.7 Reassembly instructions!*



## Replacement

### REMOVAL

Use the tweezers to pick up the Rubber PROX sensor.



Remove the Rubber PROX sensor.



### INSTALLATION

Use tweezers to put on the Rubber PROX sensor.



Rubber PROX sensor has been placed.



## Replacement

### 4.25 Assy Metal Frame LCM

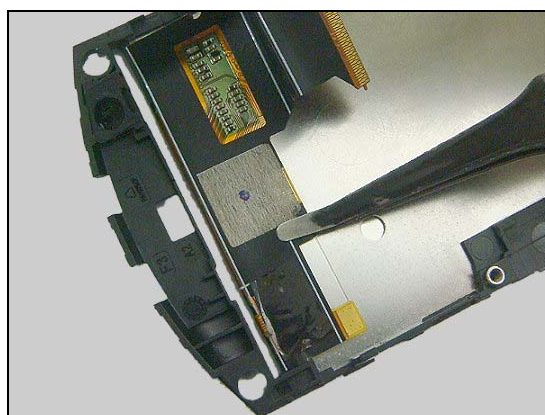
*Follow the 3.1 – 3.7 Disassembly instructions!*

Prepare the new Assy Metal Frame LCM.

*Follow the 5.1 – 5.7 Reassembly instructions!*

#### REMOVAL

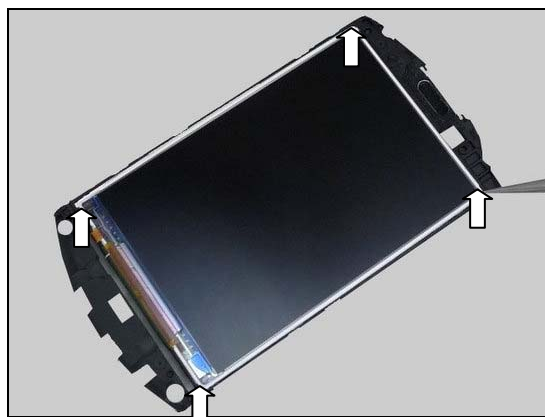
Use the Flex Film Assembly Tool to release the LCM FPC, gently slide back and forth to separate the LCM FPC and the Assy Metal Frame LCM.



There are four hooks at corners of the LCM TFT 3.2 HVGA.



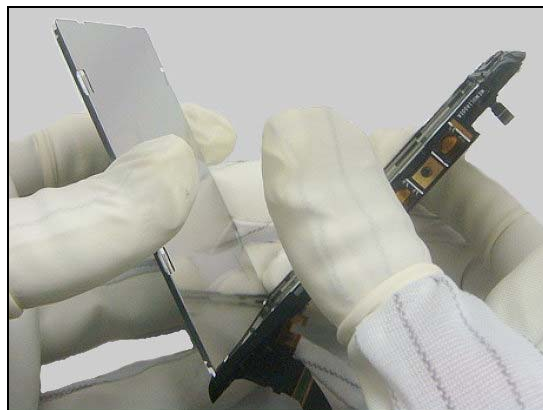
Use tweezers to release the four hooks of the LCM TFT 3.2 HVGA.



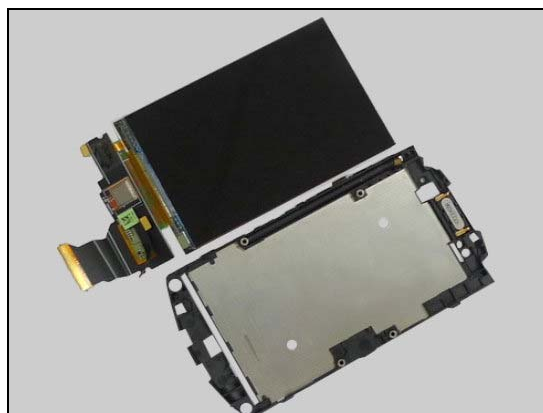


## Replacement

Carefully pull out the LCM FPC from the slit of the Assy Metal Frame LCM.



Remove the LCM TFT 3.2 HVGA.



### INSTALLATION

Insert the LCM FPC into the slit of the Assy Metal Frame LCM.

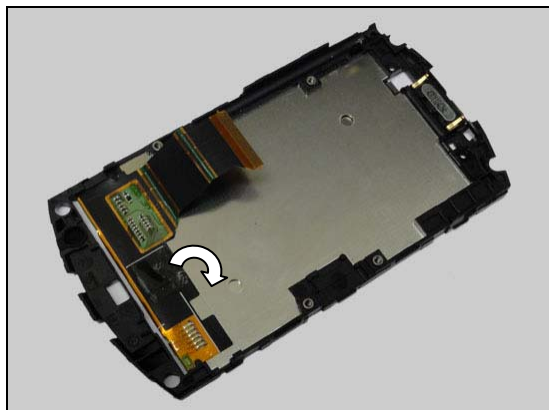


There are four hooks on the four corners of the LCM TFT 3.2 HVGA, gently press on the four corners to lock the LCM TFT 3.2 HVGA into the Assy Metal Frame LCM.



## Replacement

Stick the LCM FPC onto the Assy Metal Frame LCM.

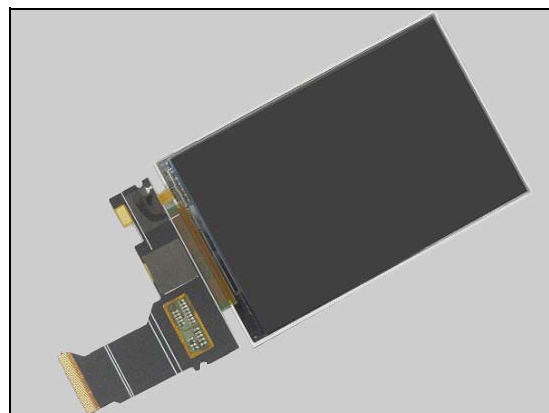


### 4.26 LCM TFT 3.2 HVGA

*Follow the 3.1 – 3.7 Disassembly instructions!*

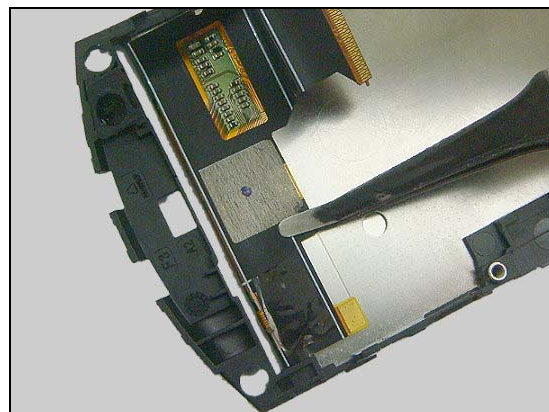
Prepare the new LCM TFT 3.2 HVGA.

*Follow the 5.1 – 5.7 Reassembly instructions!*



### REMOVAL

Use the Plastic bar to release the LCM FPC, gently slide back and forth to separate the LCM FPC and the Assy Metal Frame LCM.

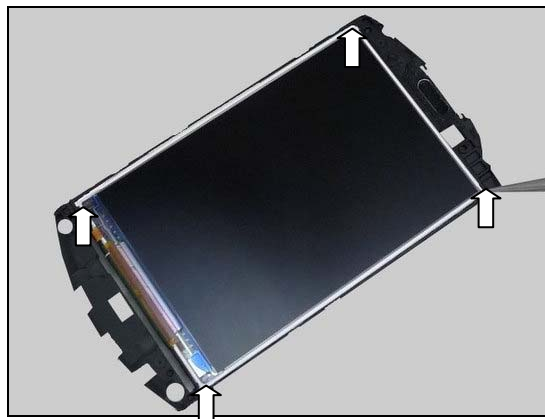


There are four hooks at corners of the LCM TFT 3.2 HVGA.

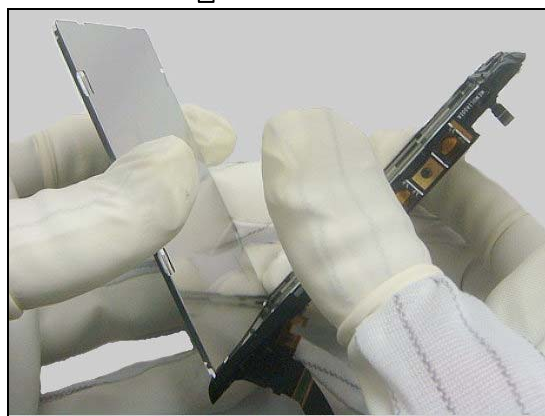


## Replacement

Use tweezers to release the four hooks of the LCM TFT 3.2 HVGA.

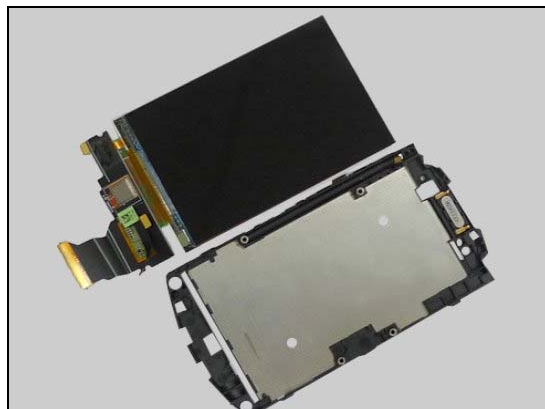


Carefully pull out the LCM FPC from the slit of the Assy Metal Frame LCM.



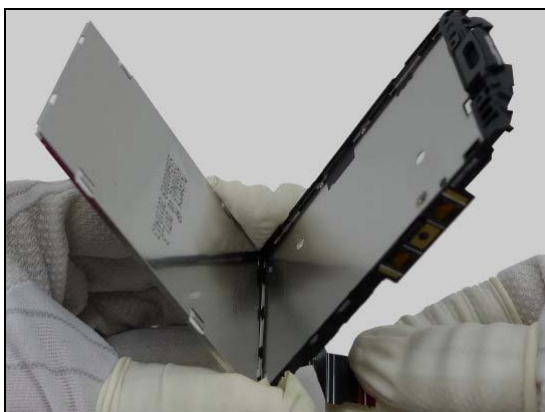
Remove the LCM TFT 3.2 HVGA.

**Scrap! LCM FPC not to be reused!**



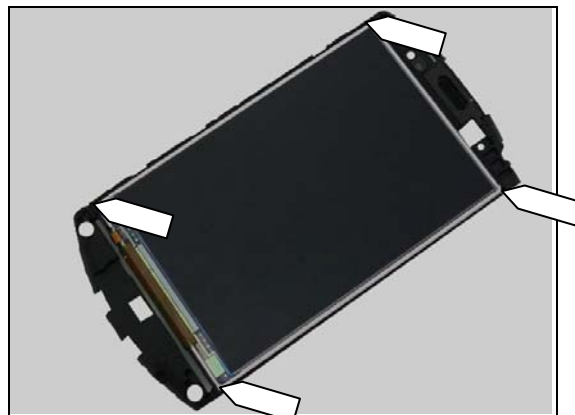
## INSTALLATION

Insert the LCM FPC into the slit of the Assy Metal Frame LCM.

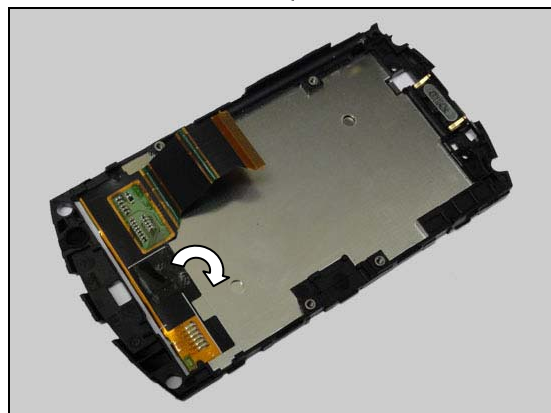


## Replacement

There are four hooks on the four corners of the LCM TFT 3.2 HVGA, gently press on the four corners to lock the LCM TFT 3.2 HVGA into the Assy Metal Frame LCM.



Stick the LCM FPC onto the Assy Metal Frame LCM.



### 4.27 Key Home

*Follow the 3.1 – 3.7 Disassembly instructions!*

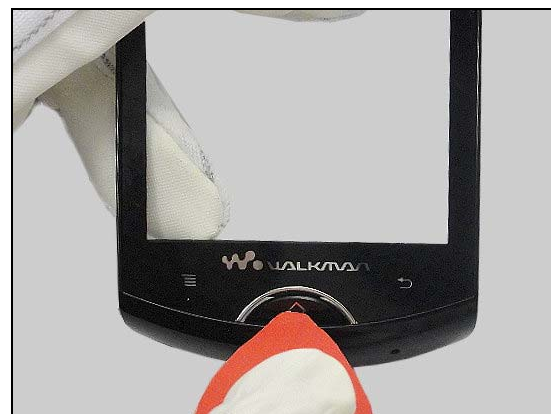
Prepare the new Key Home.

*Follow the 5.1 - 5.7 Reassembly instructions!*



### REMOVAL

Use the Guitar pick to push down the Key Home from the Front Cover+TP+LCM Sponge assy.



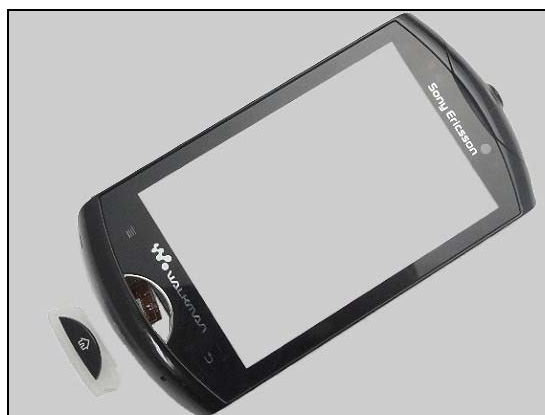


## Replacement

Use tweezers to pick up the Key Home.



Remove the Key Home.



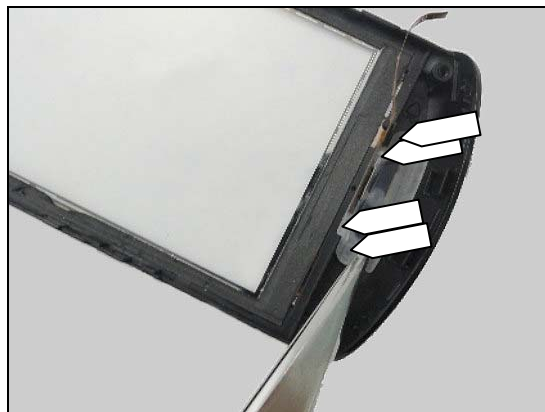
## INSTALLATION

Use the tweezers to put the Key Home onto the Front Cover+TP+LCM Sponge assy.



Use the tweezers to press the rubber around to make sure the Key Home is attached.

**Attention : There are four orientation points which are shown in the figure.**



## Replacement

### 4.28 Front Cover+TP+LCM Sponge assy

*Follow the 3.1 – 3.7 Disassembly instructions!*

Prepare the new Front Cover+TP+LCM Sponge assy.

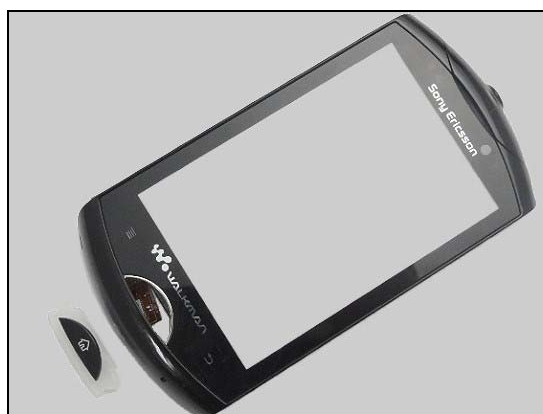
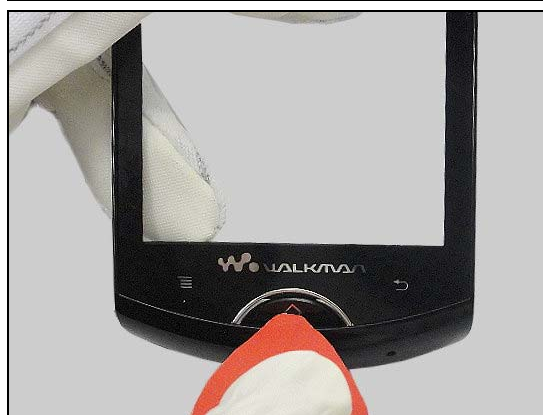
*Follow the 5.1 – 5.7 Reassembly instructions!*

#### REMOVAL

Use the Guitar pick to push down the Key Home from the Front Cover+TP+LCM Sponge assy

Use tweezers to pick up the Key Home.

Remove the Key Home.



## Replacement

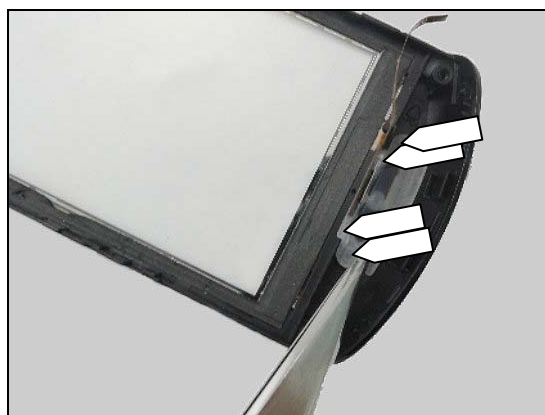
### INSTALLATION

Use the tweezers to put the Key Home onto the Front Cover+TP+LCM Sponge assy.



Use the tweezers to press the rubber around to make sure the Key Home is attached.

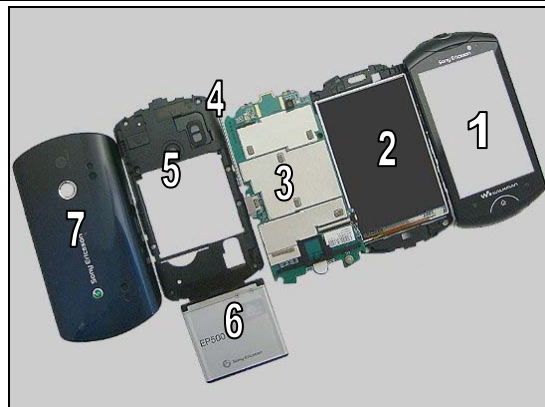
**Attention : There are four orientation points which are shown in the figure.**



## 5 Reassembly

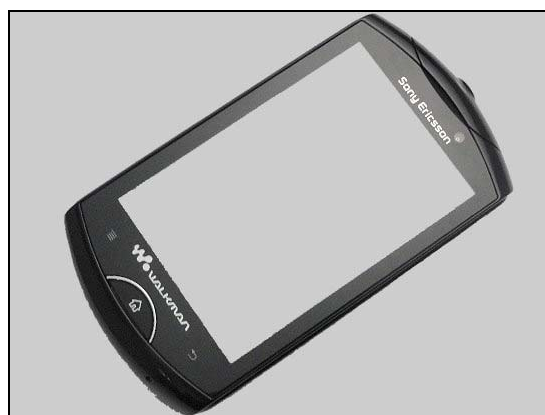
The reassembly is done in the following order:

1. Assy Front Housing
2. Assy Metal Frame LCM and LCM TFT 3.2 HVGA
3. PCBA
4. CMMB Antenna
5. Assy Housing Rear
6. Battery
7. Assy Housing Battery.



### 5.1 Assy Front Housing

Prepare the Assy Front Housing.



### 5.2 Assy Metal Frame LCM and LCM TFT 3.2 HVGA

Prepare the Assy Metal Frame LCM and LCM TFT 3.2 HVGA.



Insert the Touch Panel FPC through the slit of the Assy Metal Frame LCM carefully.

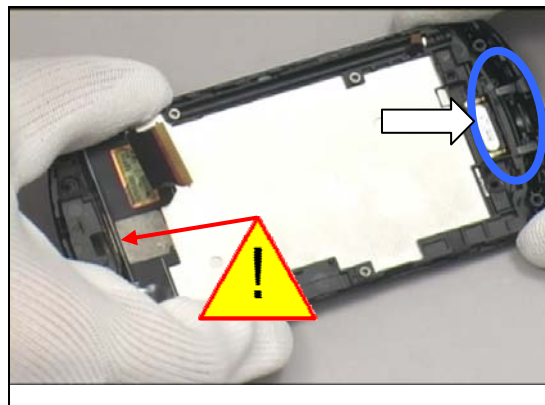




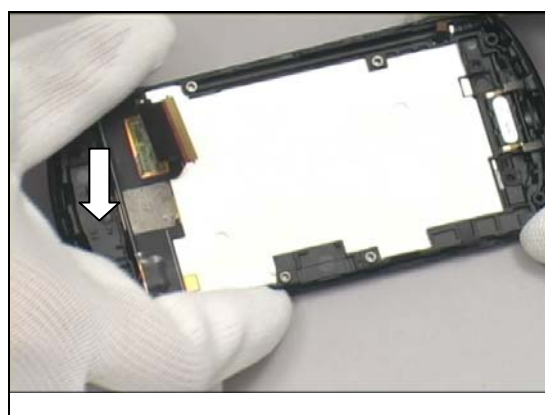
## Reassembly

Hold the LCM Frame bottom side and insert its top side into top ring carefully.

**Attention: Do not damage Touch panel FPC.**



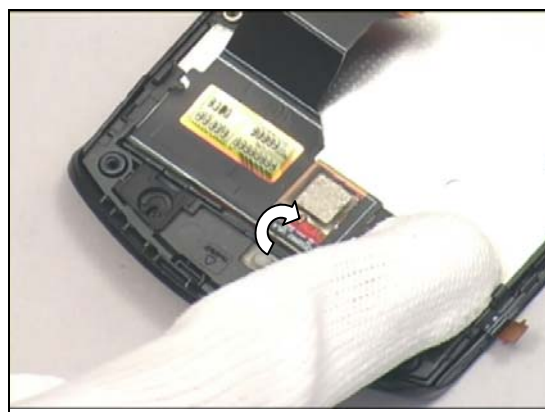
Put down the Bottom side of LCM frame.



Press down LCM Frame to fix its hooks.



Attach the Touch Panel FPC onto the LCM Frame.



## Reassembly

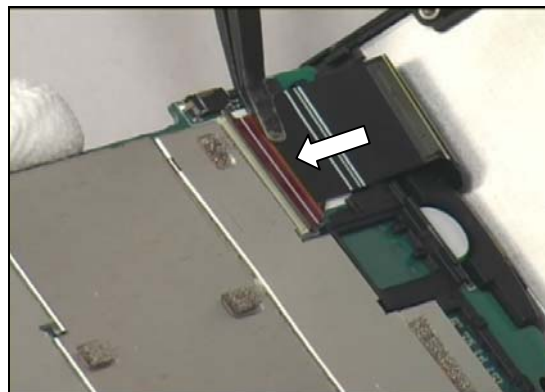
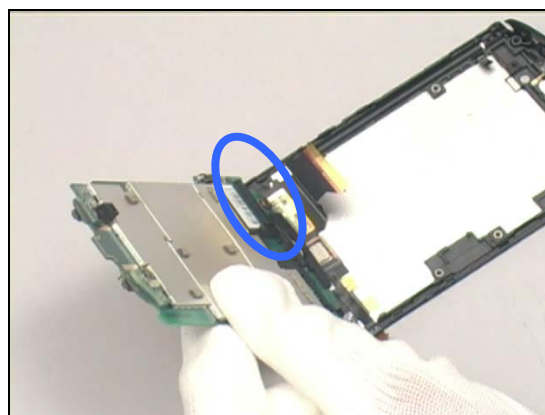
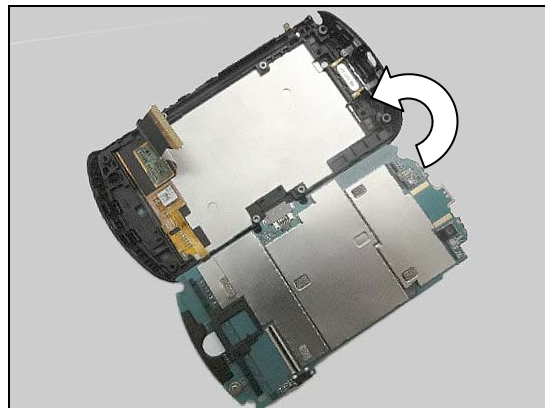
### 5.3 PCBA

Prepare the PCBA.

Hold PCBA vertically as shown in order to insert the LCM FPC into its ZIF connector.

Insert LCM FPC into its ZIF connector and lock it.

Put down PCBA top side while holding bottom side.



## Reassembly

Insert PCBA top side into top ring while holding bottom side.



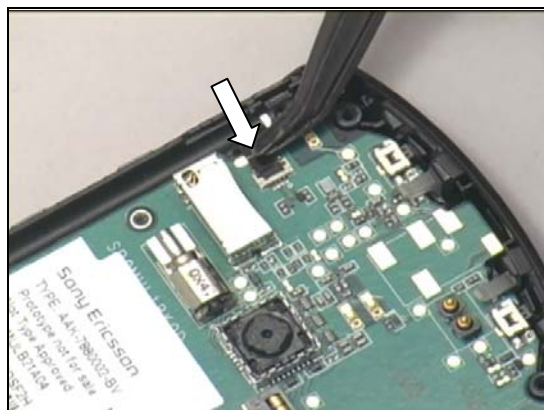
Press down PCBA to fix its hooks.



Make sure these two ZIF FPC are not folded/pressed.



Insert the side key FPC into the Conn FPC 4p.

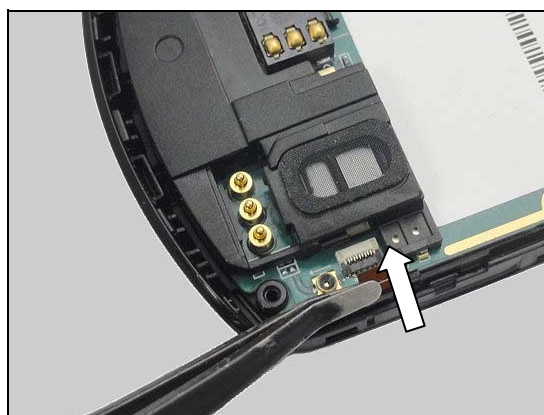


## Reassembly

Lock the Conn FPC 4p.



Insert the Touch Panel FPC into the Conn FPC 9p.



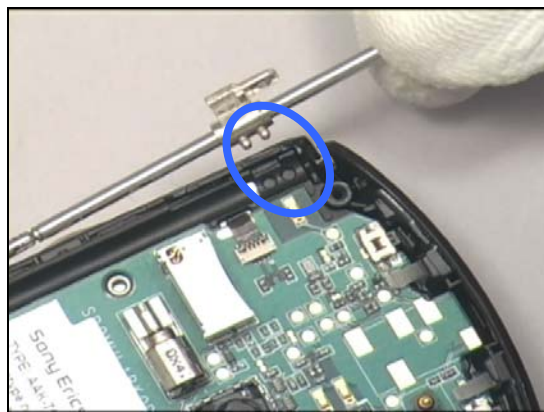
Lock the Conn FPC 9p.



## 5.4 CMMB Antenna

Prepare the CMMB Antenna.

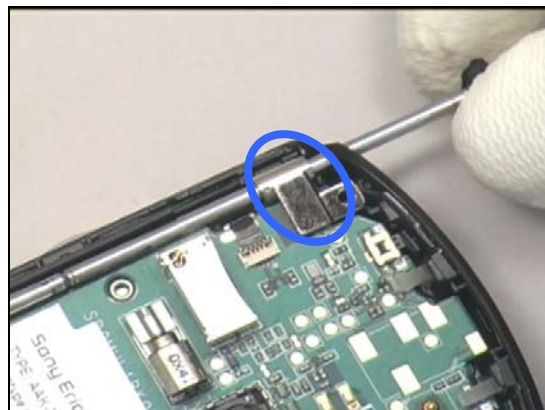
**Pay attention about these two position pillar and its carve.**





## Reassembly

Put the CMMB Antenna onto the Assy Metal Frame LCM.



### 5.5 Assy Housing Rear

Prepare the ASSY Housing Rear.



Hold the Assy Housing Rear bottom side and insert the audio Jack into its hole.



Put down the Assy Housing Rear bottom side.

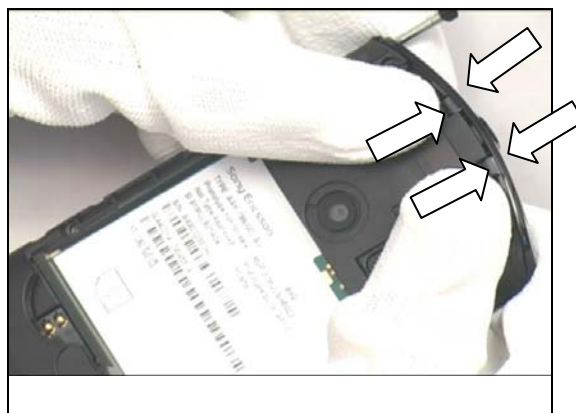


## Reassembly

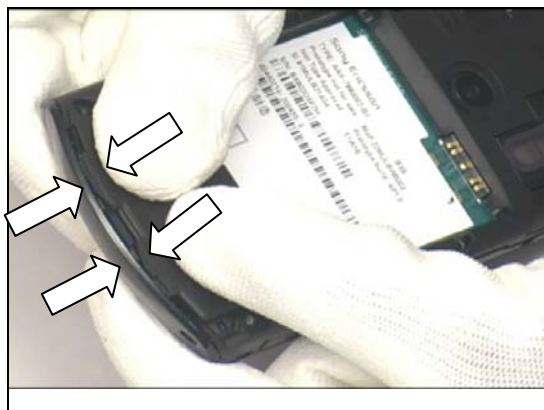
Press down the Assy Housing Rear to fix its hooks.



Press the Assy Housing Rear top side to fix the top hooks.



Press the Assy Housing Rear bottom side to fix the bottom hooks.

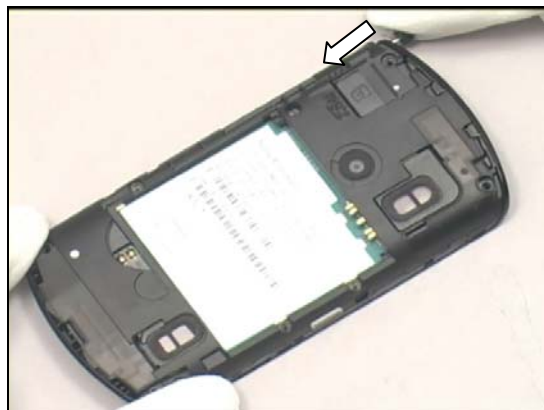


Make sure these four hooks are well assembled.



## Reassembly

Push Back the CMMB Antenna.



Assemble the RF Rubber.



Apply 12 N.CM torque to assemble the four screws M1.4\*4mm with Bits (T5).



Apply 16 N.CM torque to assemble the four screws M1.6\*5.8mm with Bits (T6).



## Reassembly

### 5.6 Battery

Prepare the Battery.



Insert and Press down the battery into its position.



### 5.7 Assy Housing Battery

Prepare the Assy Housing Battery.



Press down the Assy Housing Battery to fix its hooks.





## 6 Revision History

Rev.	Date	Changes / Comments
1	2011-07-11	Initial release
2	2011-07-14	Update screw driver torque from kgf.cm to N.CM.